

**FUN KIDS &
THE ROYAL TOWN PLANNING INSTITUTE
PRESENTS...**

AGENT PLAN-IT

**MEET AGENT PLAN-IT AND HELP PLAN TOWNS
AND PLACES FOR THE FUTURE**



ANNA MEETS YOUNG TOWN PLANNERS



TELL US ABOUT YOURSELF!

STEPHANIE

I WORK AS A PLANNER ON A RANGE OF NEW PROJECTS SUCH AS HOUSES, SHOPS AND REGENERATION - THAT MEANS REPURPOSING AND REDESIGNING OLDER PLACES TO SUIT OUR NEEDS!

JADINE

I AM A PLANNER THAT HELPS GET PLANNING PERMISSION FOR EXCITING PROJECTS LIKE NEW HOUSES AND COLLEGE CAMPUSES!

HEATHER

I'M A PLANNER FOR GLASGOW CITY COUNCIL. I WAS ALSO YOUNG PLANNER OF THE YEAR FOR MY WORK, STUDIES AND VOLUNTEERING!

ABRAHAM

I HELP HOUSE DEVELOPERS AND HOUSING ASSOCIATIONS TO BUILD IN LONDON AND THE SOUTH EAST OF ENGLAND!

WHAT HAVE YOU WORKED ON RECENTLY?

I REGENERATED A FORMER HOSPITAL IN DERBY CITY CENTRE AND CREATED 500 NEW HOUSES, SHOPS, CAFÉS, OFFICES AND COMMUNITY SPACES!

I HELPED A COLLEGE IN WILTSHIRE GET PERMISSION TO BUILD NEW TEACHING FACILITIES THAT WERE MORE ENVIRONMENTALLY FRIENDLY!

I HELPED WITH SOMETHING CALLED A "RESIDENTS BALLOT" WHICH LETS PEOPLE WHO LIVE IN LOCAL HOUSING ESTATES HELP DECIDE HOW THEIR COMMUNITY IS BUILT AND SHAPED!

RECENTLY I WORKED ON A PROJECT CALLED "STALLED SPACES" WHICH HELPED LOCAL GROUPS DEVELOP TEMPORARY PROJECTS ON UNUSED SITES, INCLUDING POP-UP GARDENS, A COMMUNITY ARTS SPACE, WILDLIFE AREAS, AND PLAY AREAS!

WHAT'S GREAT ABOUT BEING A PLANNER?

YOU ARE ABLE TO LISTEN TO THE COMMUNITY AND UNDERSTAND HOW PLANNING CAN HELP IMPROVE THE LOCAL AREA!

PLANNERS HAVE THE ABILITY TO HELP TO COMBAT CLIMATE CHANGE!

YOU GET TO MAKE DECISIONS THAT ENSURE PEOPLE HAVE WHAT THEY NEED FROM THEIR COMMUNITY AND IMPROVE THEIR QUALITY OF LIFE

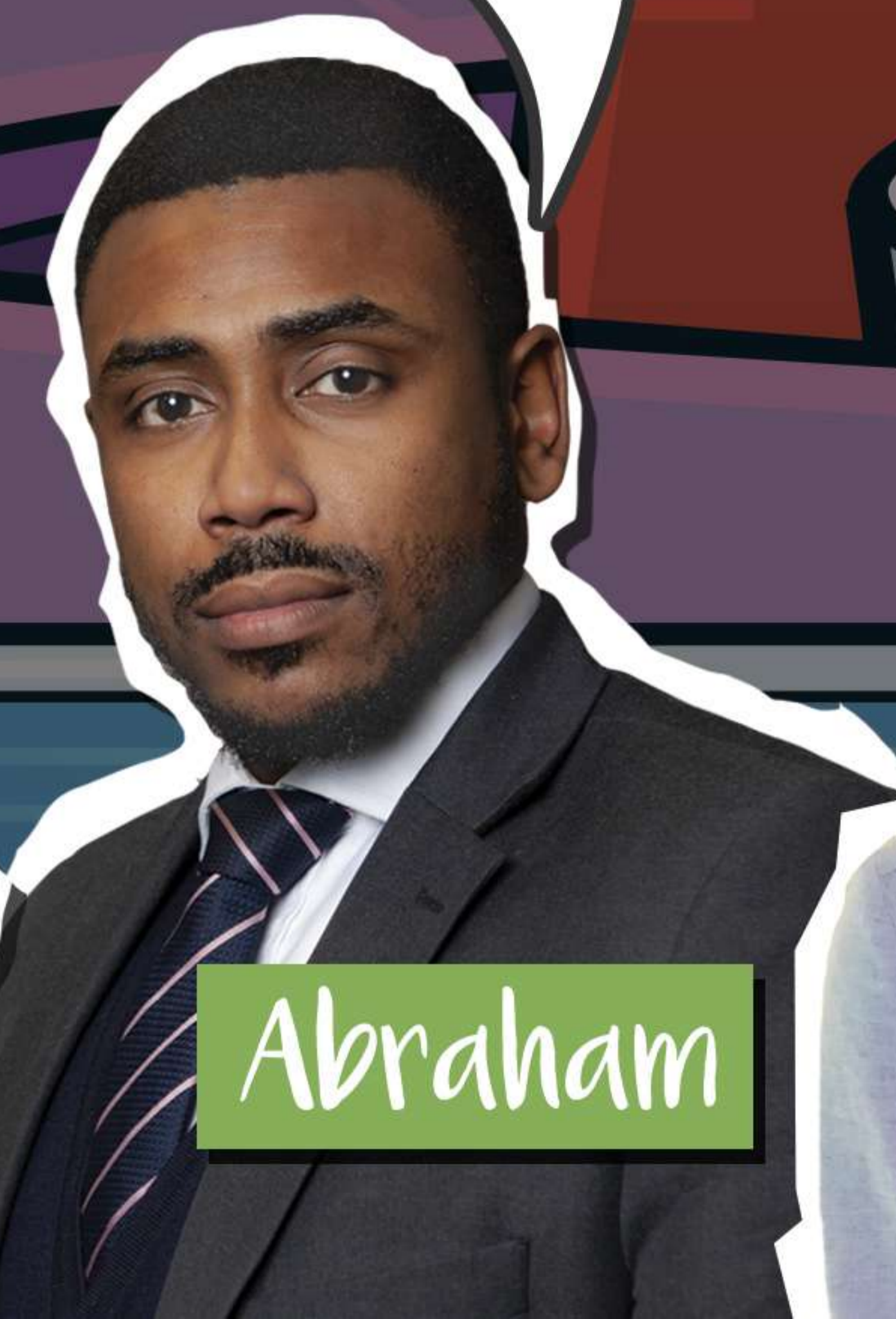
AS A PLANNER YOU WORK AS PART OF A TEAM, SO IT'S EXCITING GETTING TO WORK WITH A WHOLE RANGE OF OTHER PROFESSIONALS!



Stephanie



Jadine



Abraham



Heather

WHAT DO TOWN PLANNERS DO?

TOWN PLANNING MAKES BETTER AND MORE SUSTAINABLE PLACES FOR EVERYONE TO LIVE, WORK AND ENJOY!

Planners are interested in people, places and sustainability. They manage different demands and uses for the land around us and balance social, economic and environmental needs to shape the way that towns and cities grow.

Imagine what kinds of buildings your local area needs...you might have thought about homes, offices, shops, restaurants...what about the roads and railways, and the parks, schools and hospitals... and where should they all go?

A town planner helps find the solution. Town planning has been around since the first settlements were built thousands of years ago. These days, planning can deal with big stuff like a new sports stadium, airport or wind turbines, all the way down to extending a house, or building a play area.

I'm a planner and I design new towns and villages!

I'm a planner and I write and explain policies and rules!

I'm a planner and I protect buildings that are of historical and architectural importance!

I'm a planner and I improve communities and the environment! #ClimateAction





THE LATEST PROJECTIONS SUGGEST THAT WE WILL NEED OVER A QUARTER OF A MILLION NEW HOMES EACH YEAR FOR AT LEAST THE NEXT TEN YEARS IF THE FORECAST GROWTH IN HOUSEHOLDS IS TO BE ACCOMMODATED. THE UK IS CURRENTLY BUILDING ONLY HALF THAT NUMBER



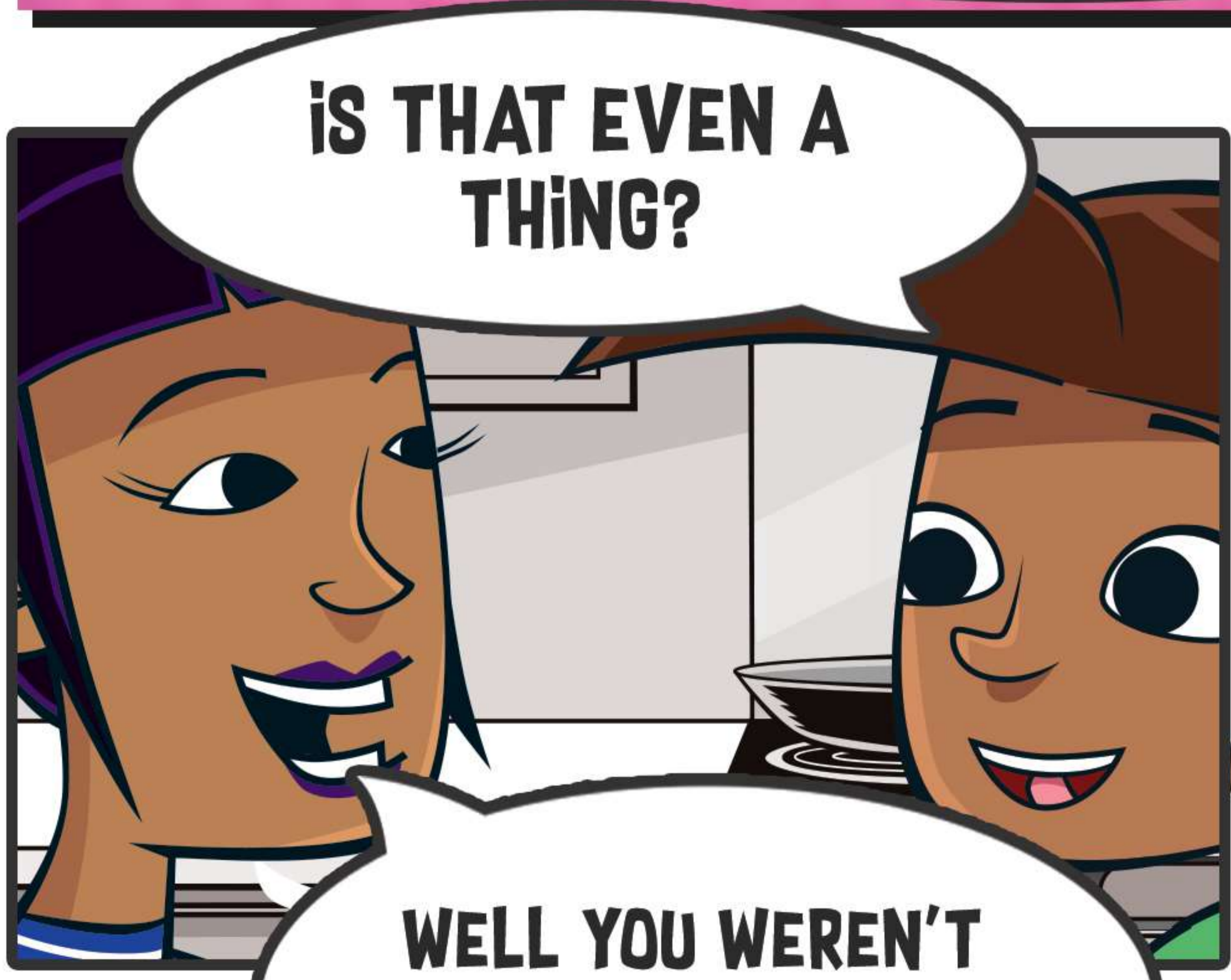
A QUARTER OF A MILLION NEW HOMES? EVERY YEAR...
IT'S IMPOSSIBLE!



IT'S ALRIGHT! CALM DOWN!

ERR... WHO ARE YOU?

I AM AGENT PLAN-IT... TOWN PLANNING SUPERHERO!



IS THAT EVEN A THING?

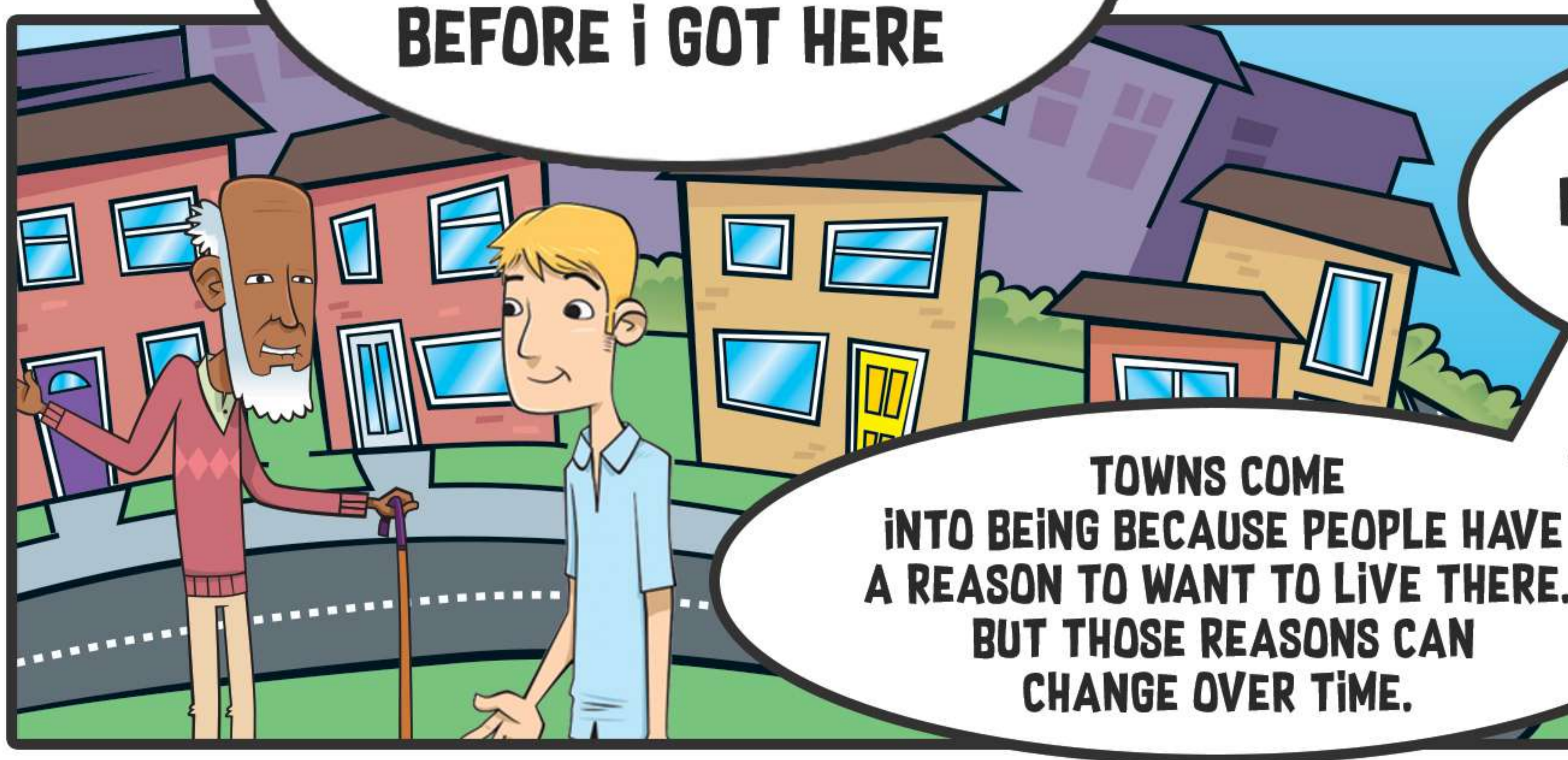
WELL YOU WEREN'T MAKING GREAT STRIDES BEFORE I GOT HERE



I SUPPOSE YOU'RE RIGHT...
IT JUST SEEMS IMPOSSIBLE TO THINK HOW WE WILL BUILD ENOUGH HOUSES
...AND WHERE THEY'LL GO!



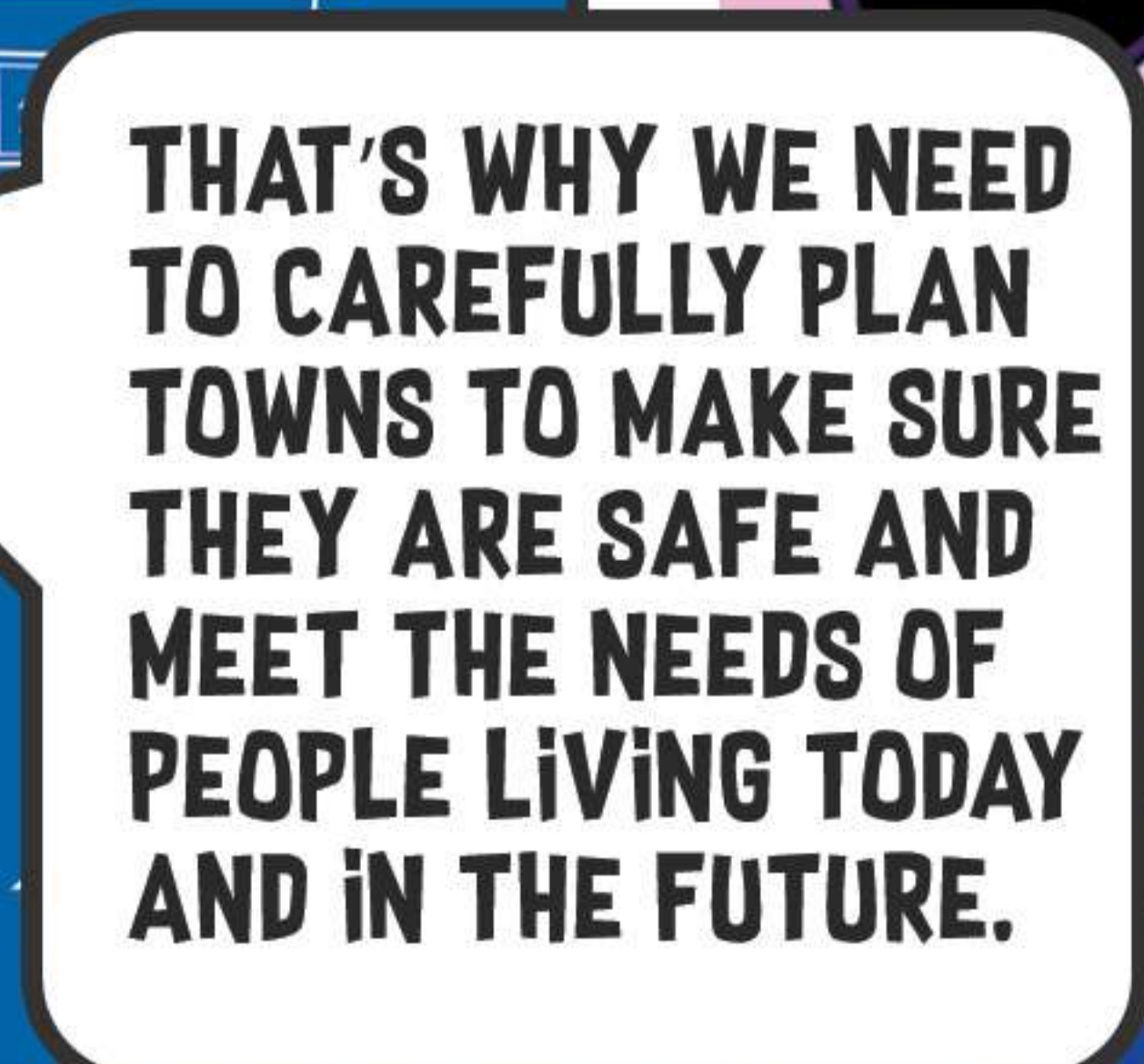
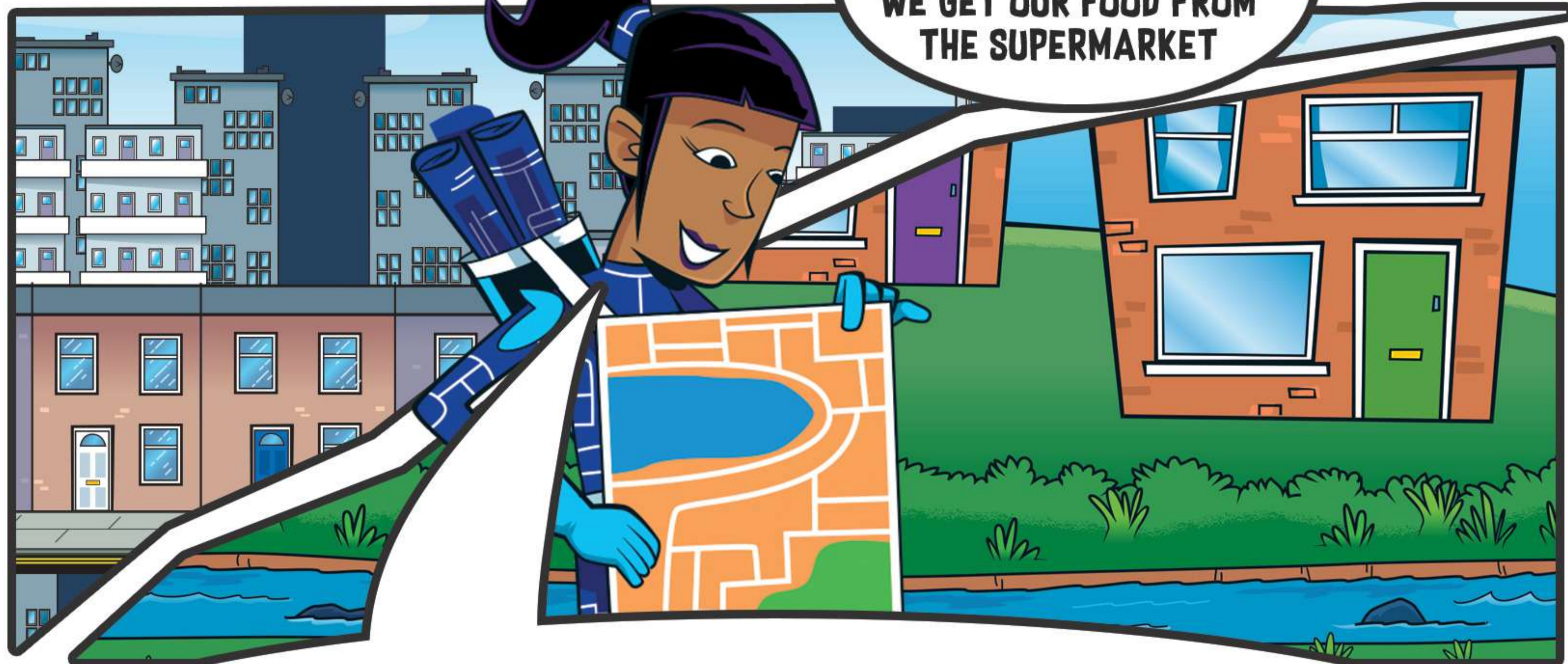
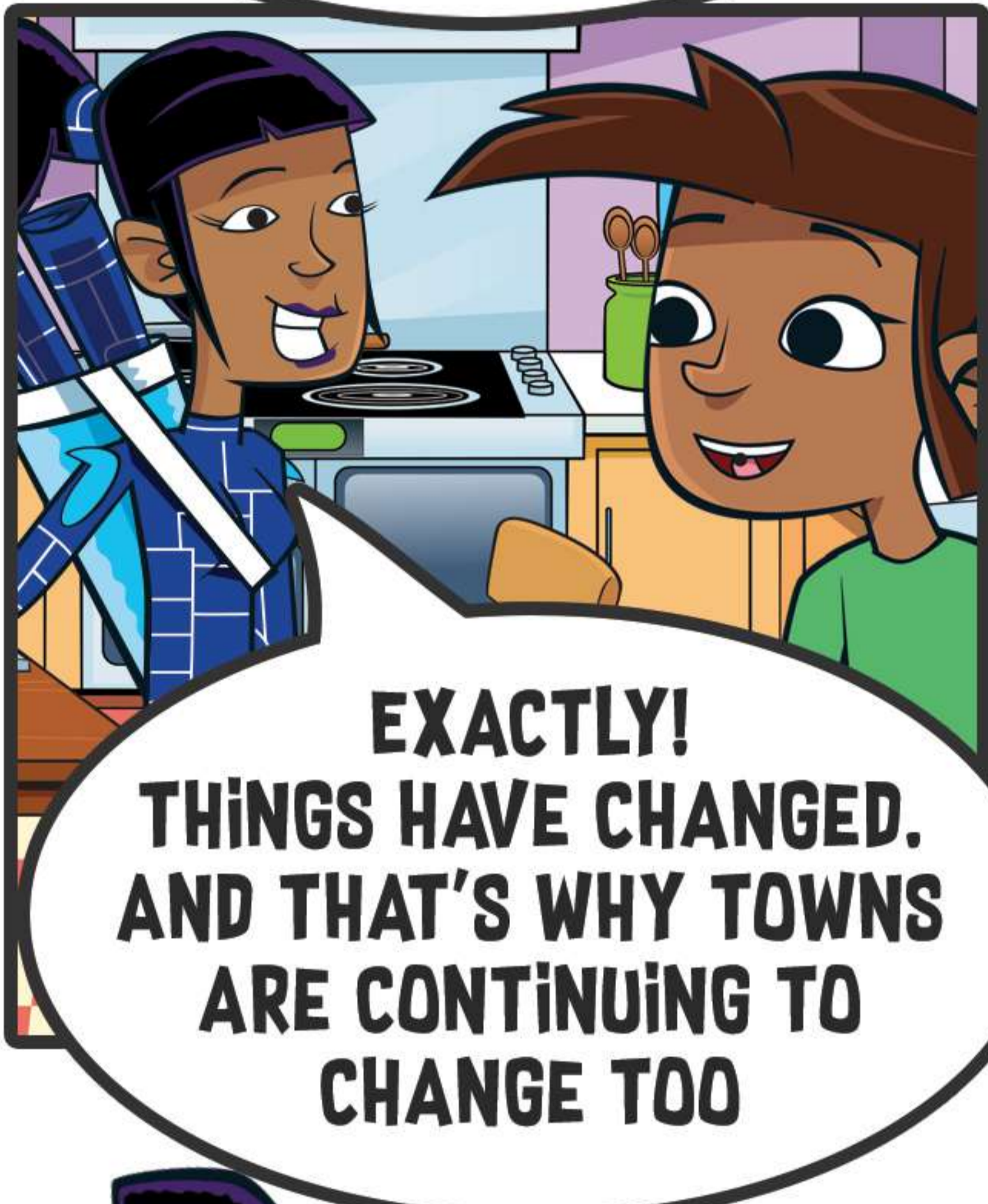
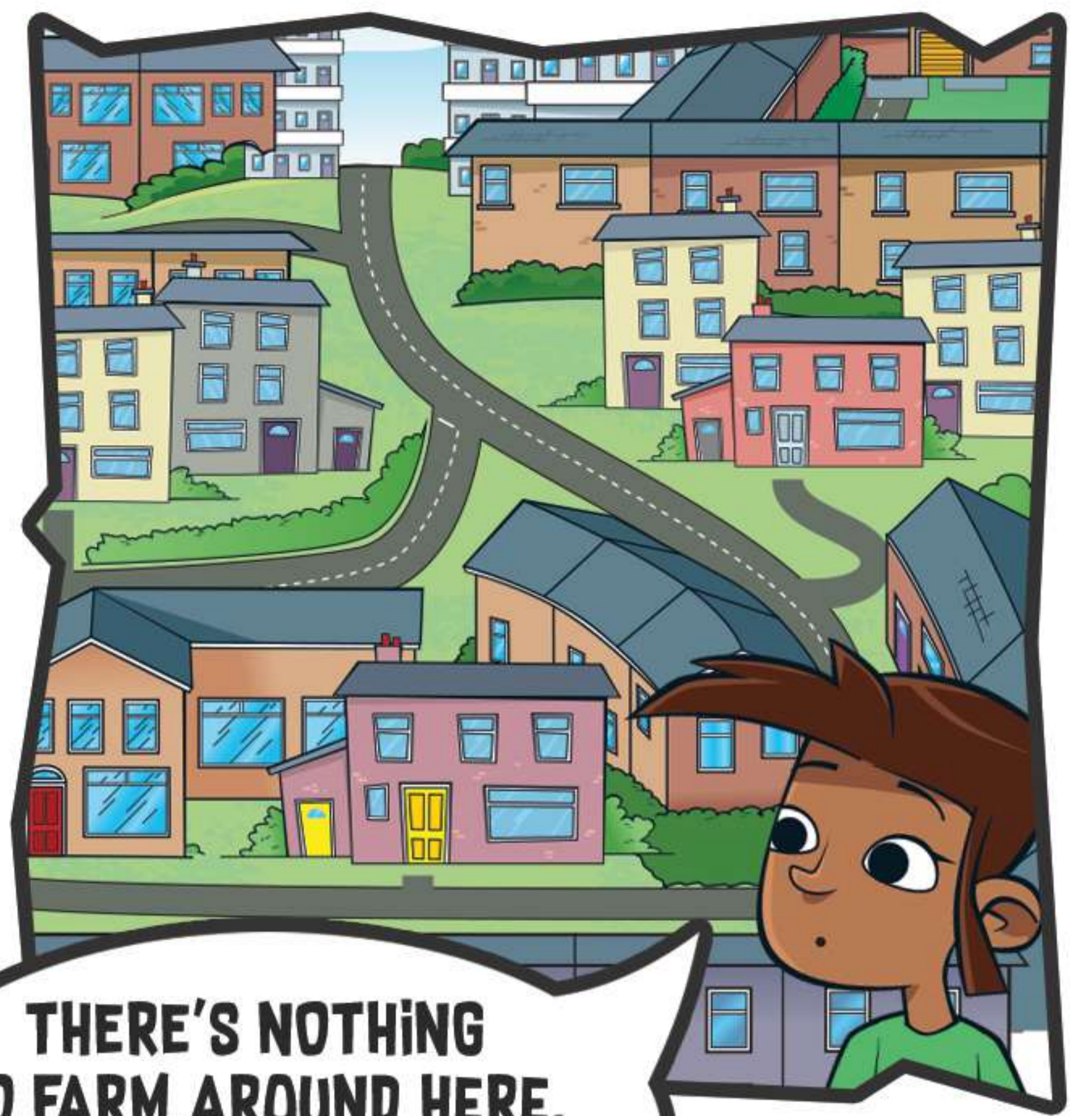
IT'S CERTAINLY DIFFICULT, BUT NOT IMPOSSIBLE. YOU JUST NEED A PLAN!



TOWNS COME INTO BEING BECAUSE PEOPLE HAVE A REASON TO WANT TO LIVE THERE. BUT THOSE REASONS CAN CHANGE OVER TIME.



TAKE YOUR TOWN, IT HASN'T ALWAYS LOOKED THE SAME



PLAN YOUR TOWN

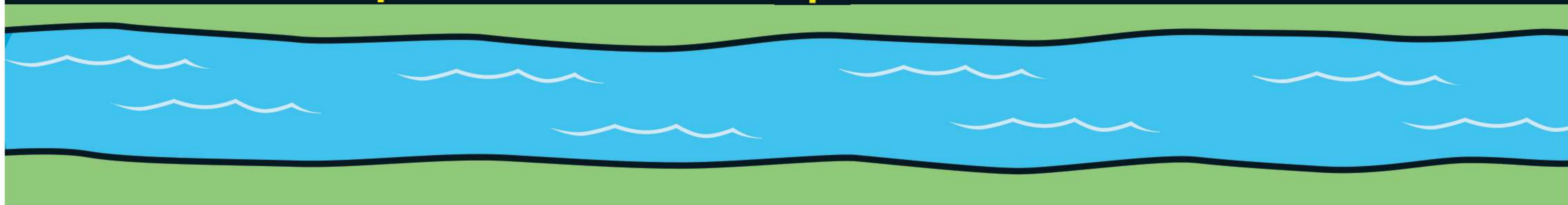
DRAW YOUR IDEAS INTO THE PLOTS OR PRINT THE CUTOUTS FROM WWW.RTPi.ORG.UK/AGENTPLANIT TO PLAN YOUR OWN TOWN! THINK ABOUT A KEY FOR THE MAP, ROADS, PARKING SPACES, GREEN SPACES, PLAY AREAS, PUBLIC TRANSPORT AND EMERGENCY SERVICES!

The form consists of a grid of dashed lines on a green background, intended for drawing a town plan. The grid is divided into several sections by thick dashed lines representing roads:

- Top Left:** A large rectangular area divided into a 2x6 grid of smaller plots.
- Top Right:** A vertical rectangular area divided into a 2x2 grid of plots.
- Middle:** A horizontal row of three plots, each divided into a 2x2 grid.
- Bottom:** A horizontal row of three plots, each divided into a 2x2 grid.

In the bottom right corner, there is a white sign with a brown border and a post, containing the text "WELCOME TO" followed by a dashed line for a name.

WELCOME TO



LIVING

THINK ABOUT WHERE THE PEOPLE IN YOUR TOWN WILL LIVE!
WHAT OTHER PARTS OF THE TOWN SHOULD BE CLOSE?
WILL PEOPLE LIVE IN HOUSES OR FLATS?



ROADS & PARKING

CARS ARE A BIG PART OF HOW WE GET AROUND, SO YOU'LL
NEED TO THINK ABOUT WHERE THESE CARS CAN TRAVEL AROUND
YOUR TOWN AND WHERE THEY PARK WHEN THEY'RE NOT ON THE ROAD!



PARKS & GREEN SPACES

REMEMBER, IT'S IMPORTANT TO HAVE GREEN SPACES IN OUR
TOWNS AS WELL! IT'S GREAT FOR WILDLIFE AND GIVES
US AN AREA TO ENJOY THE GREAT OUTDOORS!



AMENITIES

AS WELL AS HAVING SOMEWHERE TO LIVE, WE NEED THINGS TO DO!
SO THINK ABOUT SCHOOLS, SHOPS, LEISURE CENTRES, AND
WHAT PART THEY WILL PLAY IN YOUR TOWN!



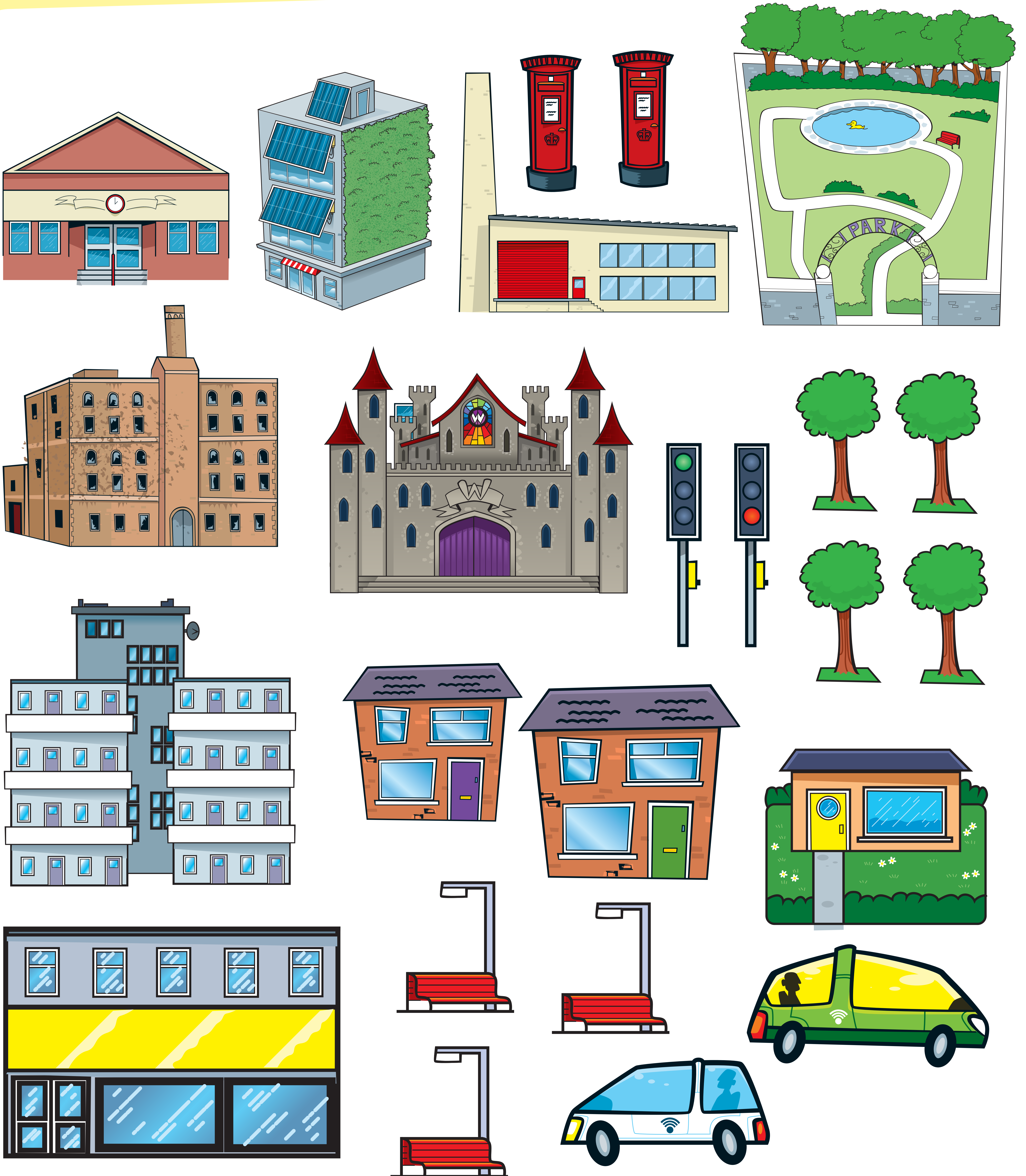
PUBLIC TRANSPORT

IT'S IMPORTANT TO HAVE PUBLIC TRANSPORT IN YOUR TOWN!
IT'S MORE ENVIRONMENTALLY FRIENDLY THAN CARS AND
MEANS THERE'S LESS TRAFFIC, SO THINK ABOUT
BUSES AND TRAINS!



HERE'S SOME FOR YOU!

CUT THESE OUT TO HELP BUILD YOUR TOWN!



TOWN PLANNING THROUGH TIME

THROUGHOUT HISTORY, AS LONG AS PEOPLE HAVE NEEDED A PLACE TO LIVE, THEY'VE HAD TO MAKE A PLAN OF WHERE TO LIVE. EARLY PEOPLE WOULD HAVE TO THINK ABOUT THE GEOGRAPHY OF LAND AND HOW TO ORGANISE THEIR HOMES IN CAVES OR WHERE TO PUT THEIR HUTS.

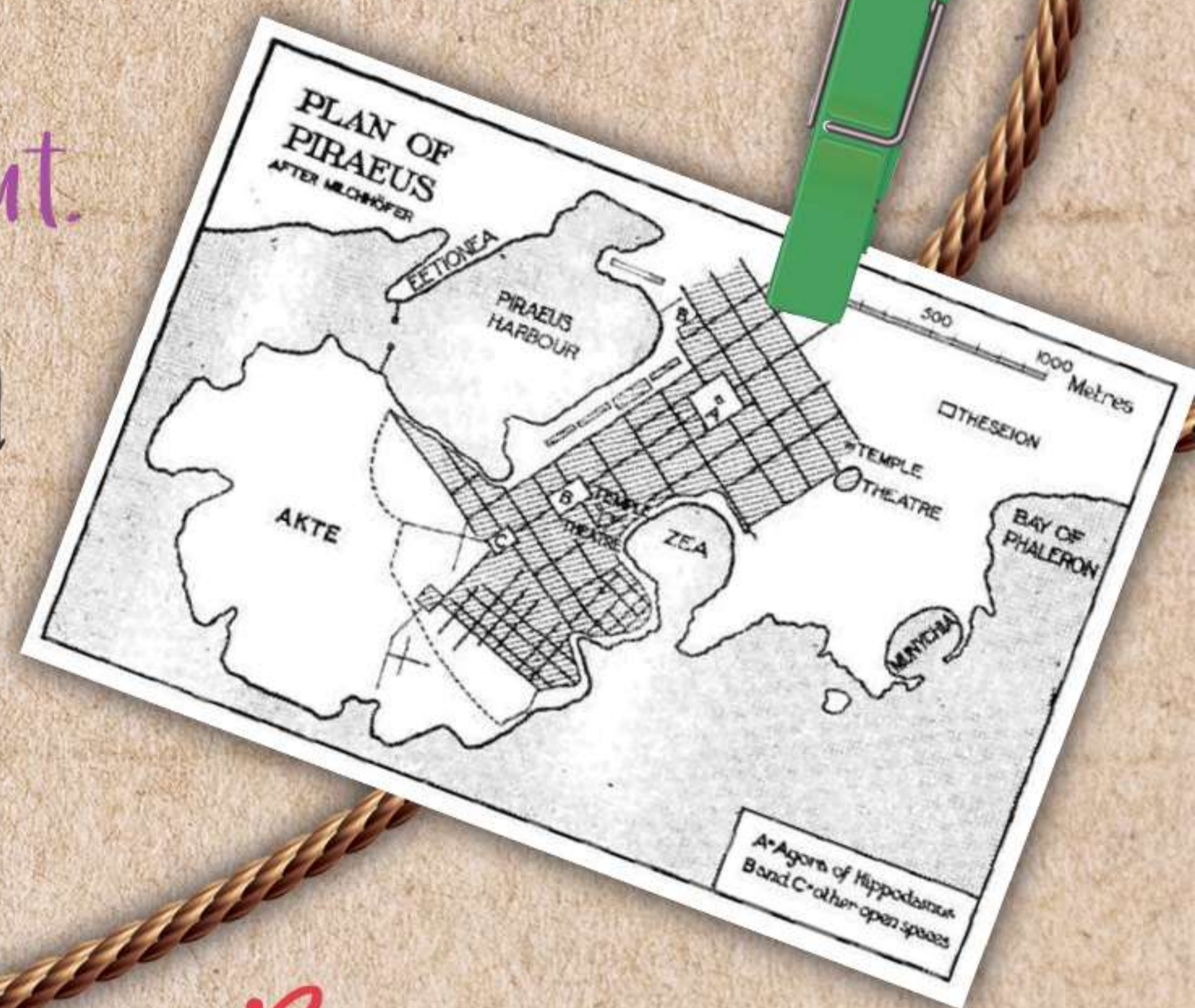
TOO CLOSE TO A CLIFF EDGE ISN'T GREAT WHEN WALKING HOME AT NIGHT. AND TOO CLOSE TO A RIVER WHEN THERE'S A FLOOD... YOU GET THE PICTURE!

ANNA HAS BEEN FINDING OUT ABOUT SOME IMPORTANT TOWN PLANNERS AND HISTORICAL EVENTS IN PLANNING.

Anna's Notebook

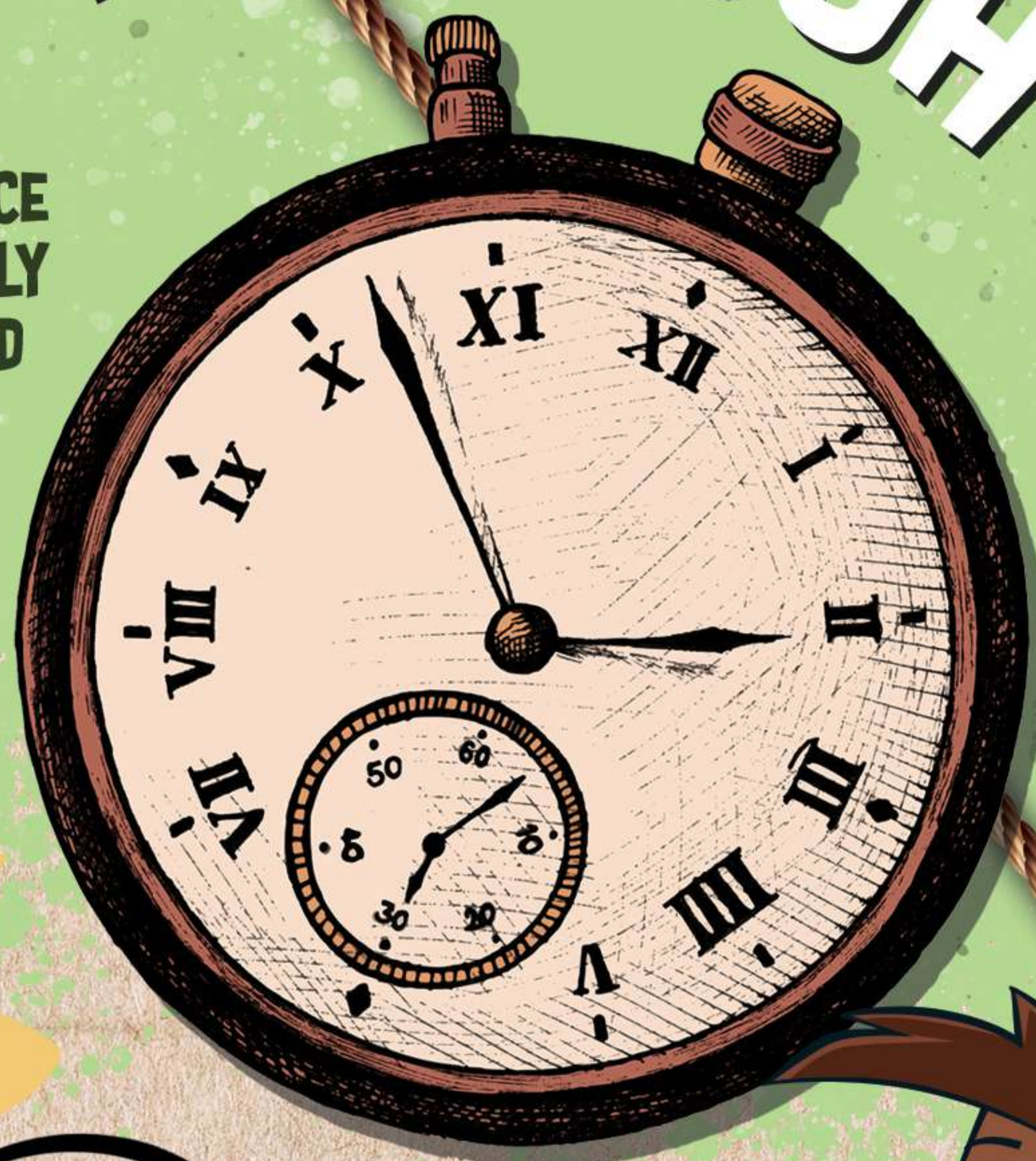
Greek Grids

Even the Ancient Greeks planned their towns! Hippodamus was an Ancient Greek philosopher who was known as the father of city planning. He created an **orthogonal urban layout**. This means, more or less, square street blocks or grids. You find these sorts of cities all over the world. America is particularly well known for its blocks, although these weren't built by the Greeks - it was just seen as a sensible and simple way to build a city.



Roman Forums

The Romans also planned their cities carefully, often with a central forum surrounded by a grid of streets. The roads would be the same width, except for two which crossed the centre. Most Roman cities were close to rivers which provided water, transport and sewage disposal. No one wants to drink dirty water so they made sure that the clean water was near to Roman homes and the dirty water was kept safely away! Lots of European towns today still keep parts of their Roman design.



Shaping The Land

Over time, villages turned into towns and towns into cities across Britain and Europe. Often their size and shape wasn't really planned - it would simply depend on the field patterns and the geography in that area. Sometimes planners would overlay the land with more formal patterns, to make these cities nicer or easier places in which to live. One example is Paris with the Arc de Triomphe at the western end of the Champs-Élysées - a long, broad avenue.



Victorian Workers Housing

Things changed dramatically in late 19th century Britain. Many people lived in overcrowded dirty slums which threatened to sprawl out of control. Some factory owners spent money creating good houses and brand-new neighbourhoods for their workers - such as Cadburys' Bournville scheme.

New laws followed to make living conditions more pleasant for everyone and to protect the countryside. Part of this was creating **Green Belts** - areas around existing towns where houses can't be built.



GARDEN CITIES

Ebenezer Howard was a famous town planner, who created the **Garden City** movement in the 1900-20s. He wanted to design healthy living spaces for workers by linking the town offices, shops and houses with green spaces. It's because of planners like Ebenezer that we think about protecting the environment even when we do need to build towns.

Masterplans

Patrick Abercrombie was a planner famous for Masterplanning. This means looking at a city and thinking about how it has changed or might be changing in the future. Big changes need big plans - especially in big cities! Abercrombie's masterplans to redesign parts of London and Edinburgh were famous in the 1940s.



NEW TOWNS

New Towns were built after the second world war, from the 1950s to the 1970s. These were designed to make it easy to get around, with houses, schools and shops arranged in small neighbourhoods around a Town Centre. Houses were designed to be bigger than the tiny terraces of the Victorian and Edwardian Age and most houses had gardens. Planners wanted to make them healthy places to live and so many have bicycle paths and lots of trees and parks.



Different places have a different feel. Planners can help to keep a certain feel or even create a new one altogether! In the 1960-70s, Gordon Cullen started the Townscape movement to understand the 'feel' of the places we live. Jane Jacobs and Kevin Lynch realised that we all have 'mental maps' of the places we live - which can show what is important to us - and what isn't! If planners can understand these mental maps, they can build better towns and cities.

Townscapes & Mental Maps

21st Century Urban Regeneration

Urban Regeneration is the name given to turning derelict areas into vibrant new places to live, work and relax.

Alison Nimmo helped turn a neglected part of East London into the Olympic Park in 2012. Urban regeneration also helped to create new spaces for Glasgow's Commonwealth Games in 2014, Manchester in 2002 and is underway for Birmingham in 2022.



TRY IT YOURSELF!

WHY DON'T YOU HAVE A GO AT EXPLORING THE PEOPLE AND PLACES IN TOWN PLANNING AND CREATE A CLOTHESLINE TIMELINE? ALL YOU NEED IS SOME STRING, CARD AND CLOTHES PEGS!

1

START BY STICKING OR TYING THE STRING BETWEEN TWO WALLS, OR TWO STEADY OBJECTS.

2

WRITE "GREEKS" ON A CARD AND PEG IT AT THE LEFT-HAND SIDE OF THE STRING. AND THEN WRITE "THE FUTURE" ON ANOTHER CARD AND PEG IT AT THE OTHER END OF THE STRING. THIS IS YOUR TIMELINE.

3

NOW YOU WILL NEED SOME TOWN PLANNING IMAGES. YOU'LL FIND SOME AT WWW.RTPi.ORG.UK/AGENTPLANIT. PRINT THEM OFF, CUT THEM OUT AND GLUE THE IMAGES TO SOME CARDS. WHY NOT LOOK ONLINE AND SEE WHAT OTHER TOWN PLANNERS, EVENTS AND LOCATIONS YOU CAN FIND? THERE MAY BE PICTURES, DIAGRAMS AND PORTRAITS YOU COULD ADD TO YOUR DISPLAY. PRINT THE IMAGES OFF, OR PERHAPS DRAW THE IMAGES, AND WRITE ANY INFORMATION YOU HAVE FOUND ABOUT THEM ON THE CARDS.

4

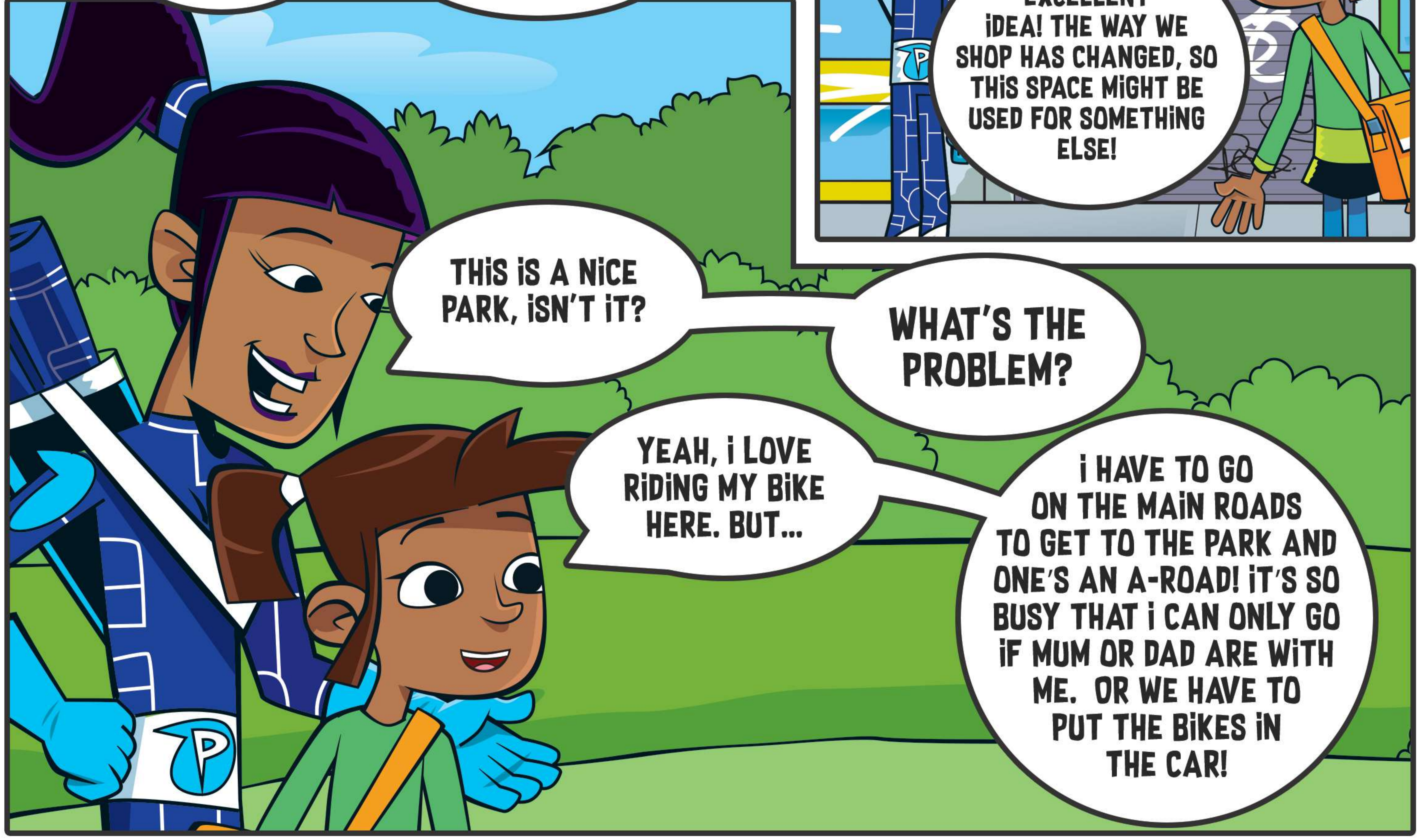
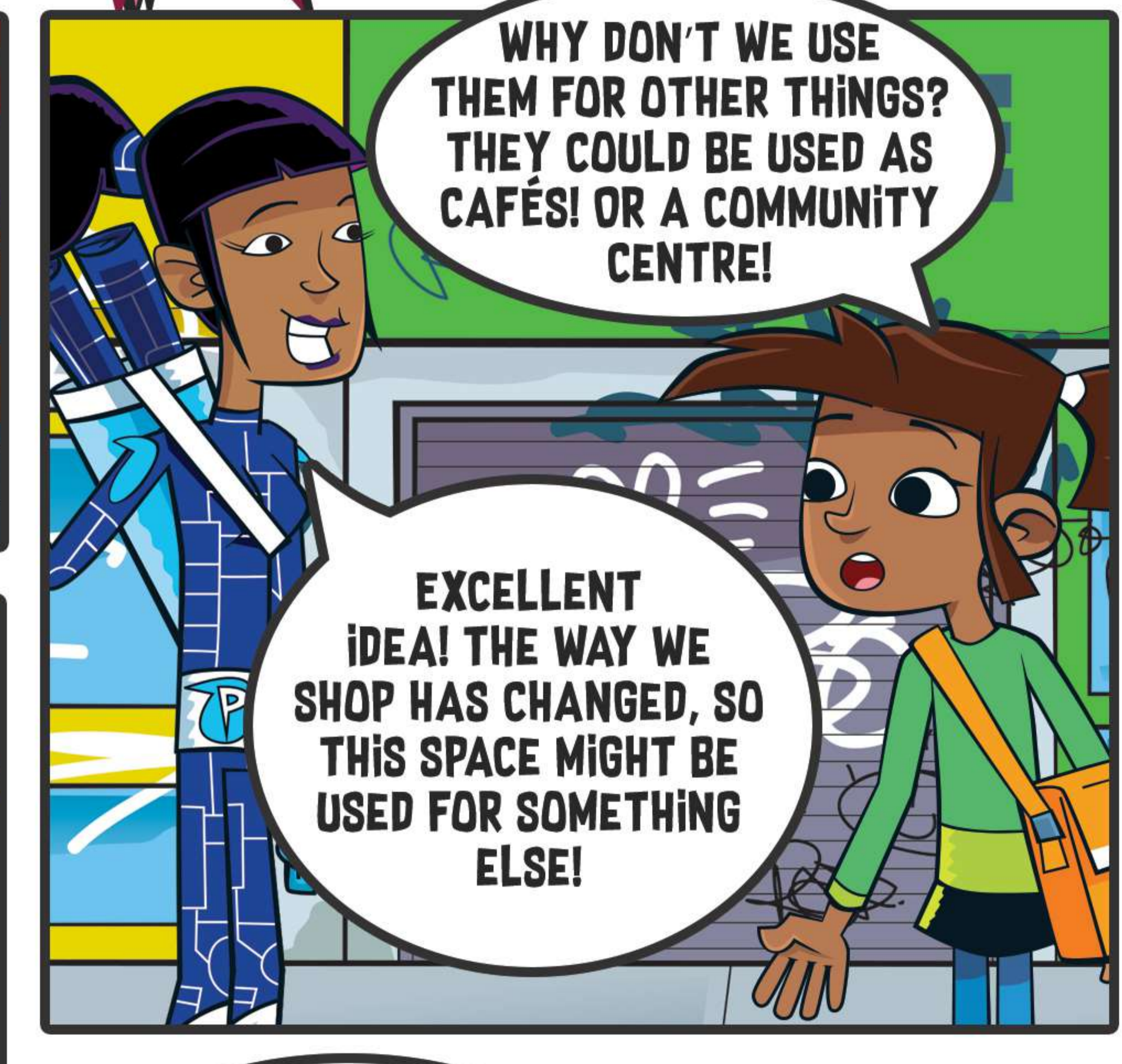
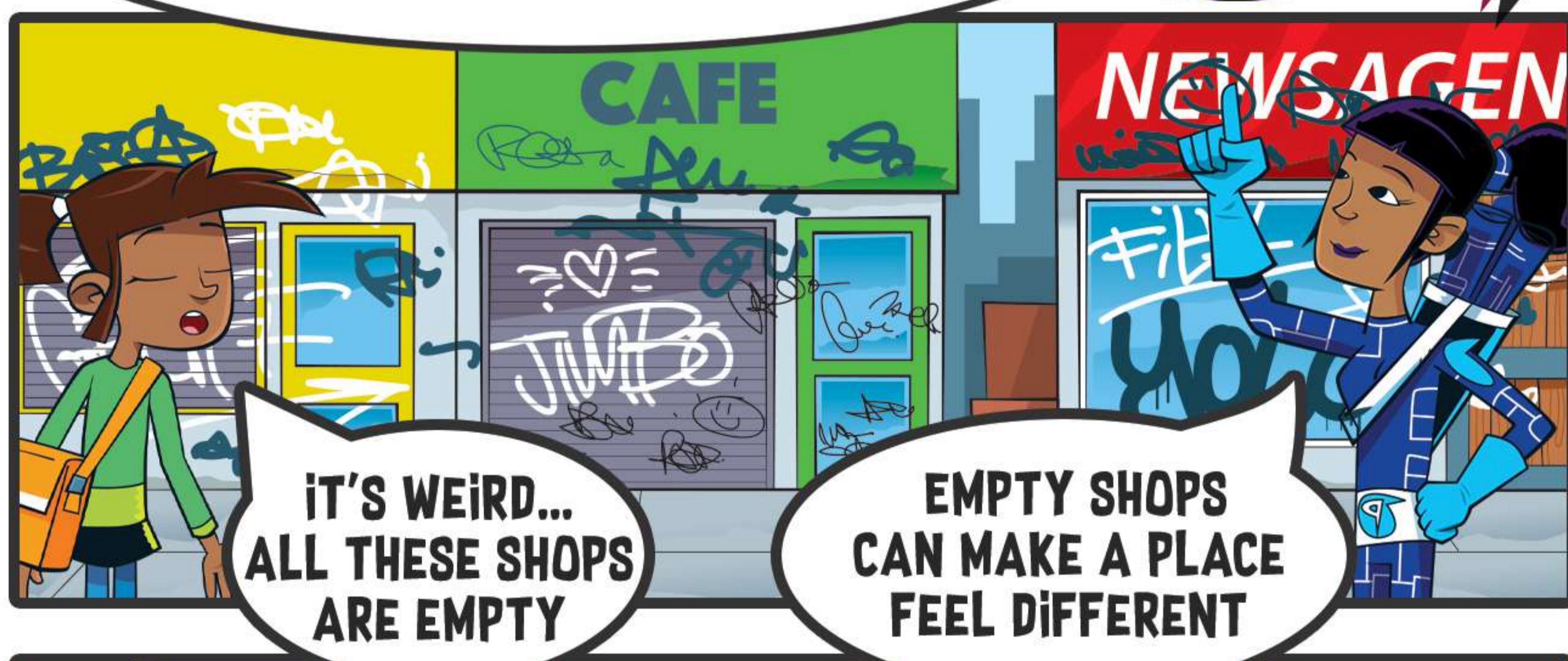
ONCE YOU HAVE ALL YOUR CARDS READY, SORT THEM INTO DATE ORDER AND THEN CHOOSE WHEREABOUTS ON THE STRING YOU WILL PLACE THEM.

5

USE THE CLOTHES PEGS TO ATTACH YOUR CARDS IN THE ORDER YOU WANT. (IF YOU DON'T HAVE SPACE FOR A CLOTHESLINE TIMELINE, INSTEAD CREATE A GRID ON PAPER AND FILL THE SQUARE IN THE TOP LEFT WITH "GREEKS" AND THE BOTTOM RIGHT WITH "THE FUTURE" AND THEN PASTE OR WRITE THE INFORMATION YOU HAVE FOUND IN ORDER IN BETWEEN.)

WE'D LOVE TO SEE YOUR CLOTHESLINE TIMELINES. WHY NOT EMAIL A PICTURE TO US AT AMBASSADORS@RTPi.ORG.UK







SEEMS CRAZY TO GO FOR A LOVELY BIKE RIDE... WHEN YOU GO HALF THE WAY BY CAR!

IF THERE WAS A SAFE CYCLE PATH I COULD GO BY MYSELF

NO CARS AND NO POLLUTION!



WHAT ABOUT HOUSES? HOW CAN THEY BE IMPROVED?

WELL FLATS ARE A GOOD WAY TO CREATE LOTS OF HOMES WHEN YOU DON'T HAVE A LOT OF SPACE!

ANYTHING WRONG WITH THAT?



TWEET

THEY DON'T HAVE GARDENS, AND GREEN SPACE IS IMPORTANT, RIGHT?

THAT'S RIGHT! THEY HELP SUPPORT WILDLIFE AND HELP US TO ENJOY BEING OUTSIDE!



YOU COULD CREATE GREEN WALLS ON THE BLOCKS OF FLATS TO HELP WILDLIFE! THAT'S WHERE PLANTS ARE PLACED ON THE BUILDING!

MAYBE THEY COULD MAKE A ROOF TOP GARDEN TOO, FOR EVERYONE TO ENJOY

ANOTHER GREAT IDEA!

YOU SEE! THERE'S ALL SORTS OF PROBLEMS TOWN PLANNING CAN SOLVE!



SO TOWN PLANNERS GET TO DO THIS FOR A JOB?

THAT'S RIGHT!



SHE'S GONE AGAIN!

AGENT PLAN-IT'S WORD SEARCH!

R M Z C E B S I N C L U S I V E S
P X T Z N R U F Z X M C R T H D C
O T I Y E O S P O P U L A T I O N
L R H O R W T H N G T I L D P C G
L A L M G N A O E B O M E I Y L R
U N J A Y F I U B D W A C C R J E
T S D C W I N S R E N T D O M F E
I P C T N E A I E V P E F M A W N
O O T I P L B N G E L C L M S T B
N R V O T D L G E L A H O U T B E
U T C T G Y E M N O N A O N E P L
V V G F R P G I E P N N D I R Q T
G S B M E L V M R M E G P T P K O
X P U Q E A V P A E R E L Y L A P
E A I J N C P R T N L M A A A J B
J C L Q W E V O I T I A I U N U I
G E D B A Y P V O Y P G N X I X V
P G I M L G V E N J G J B D X C W
Y K N K L R R E C Y C L I N G Z P
Z Q G E N V I R O N M E N T L F O



**INCLUSIVE
DEVELOPMENT
SUSTAINABLE
TOWN PLANNER
GREENBELT
BROWNFIELD
POPULATION
RECYCLING
FLOOD PLAIN**

**CLIMATE CHANGE
TRANSPORT
BUILDING
LAND
GREEN WALL
POLLUTION
ENERGY
ENVIRONMENT**

**CITY
IMPROVE
HOUSING
REGENERATION
COMMUNITY
PLACE
SPACE
MASTERPLAN**

"WHERE YOU LIVE" TIMELINE

WHY DON'T YOU HAVE A GO AT EXPLORING HOW WHERE YOU LIVE WAS PLANNED AND THE PEOPLE INVOLVED, AND CREATE A CLOTHESLINE TIMELINE? ALL YOU NEED IS SOME STRING, CARD (POSTCARD SIZE IS IDEAL) AND CLOTHES PEGS!

1

START BY STICKING OR TYING THE STRING BETWEEN TWO WALLS, OR TWO STEADY OBJECTS.

2

WRITE "LONG TIME AGO" ON A CARD AND PEG IT AT THE LEFT-HAND SIDE OF THE STRING. AND THEN WRITE "THE FUTURE" ON ANOTHER CARD AND PEG IT AT THE OTHER END OF THE STRING. THIS IS YOUR TIMELINE.

3

LOOK ONLINE AND SEE WHAT INFORMATION AND IMAGES YOU CAN FIND! THERE MAY BE PICTURES, DIAGRAMS AND PORTRAITS YOU COULD ADD TO YOUR DISPLAY. PRINT THE IMAGES OFF, OR PERHAPS DRAW THE IMAGES, AND WRITE ANY INFORMATION YOU HAVE FOUND ABOUT THEM ON THE CARDS.

4

ONCE YOU HAVE ALL YOUR CARDS READY, SORT THEM INTO DATE ORDER AND THEN CHOOSE WHEREABOUTS ON THE STRING YOU WILL PLACE THEM.

5

USE THE CLOTHES PEGS TO ATTACH YOUR CARDS IN THE ORDER YOU WANT. (IF YOU DON'T HAVE SPACE FOR A CLOTHESLINE TIMELINE, INSTEAD CREATE A GRID ON PAPER AND FILL THE SQUARE IN THE TOP LEFT WITH "LONG TIME AGO" AND THE BOTTOM RIGHT WITH "THE FUTURE" AND THEN PASTE OR WRITE THE INFORMATION YOU HAVE FOUND IN ORDER IN BETWEEN.)

WE'D LOVE TO SEE YOUR CLOTHESLINE TIMELINES. WHY NOT EMAIL A PICTURE TO US AT AMBASSADORS@RTPI.ORG.UK



WANT TO FIND OUT MORE ABOUT TOWN PLANNING?

GO TO WWW.RTPi.ORG.UK/BECOMEAPLANNER

HERE'S SOME REAL-LIFE TOWN PLANNERS AND WHY THEY LOVE IT...



HEATHER

I LOVE SEEING BOTH PEOPLE AND WILDLIFE ENJOYING DIFFERENT PLACES IN OUR TOWNS AND CITIES.

I BECAME A PLANNER TO HELP SHAPE THE DESIGN OF SPACES FROM THE SMALLEST GREEN AREA TO LARGE NEW NEIGHBOURHOODS.

I CAME ACROSS PLANNING WHEN LOOKING AT GEOGRAPHY COURSES.

IT WAS THEN THAT I REALISED MOST OF THE SCHOOL TOPICS I FOUND MOST INTERESTING WERE ACTUALLY RELATED TO PLANNING.

PLANNING MEANS YOU CAN CREATE PLACES AND SPACES THAT AFFECT OUR BEHAVIOUR! AND I WANTED TO BE A PART OF THAT PROCESS.



JADINE



WOULD YOU LIKE A REAL-LIFE TOWN PLANNER TO COME TO YOUR SCHOOL? JUST EMAIL AMBASSADORS@RTPi.ORG.UK

ABOUT FUN KIDS

We're the UK's children's radio station. Listen on DAB digital radio across the UK, online at funkidslive.com, on the Fun Kids app, or by saying "play Fun Kids" to your smart speaker. There's the biggest tunes, amazing competitions, funny stories and celebrity guests all day long!



ABOUT RTPi

The Royal Town Planning Institute is the UK's leading planning body for spatial, sustainable and inclusive planning. Find out more at www.rtpi.org.uk