



THE NORTH WEST PLANNING YEAR
A REVIEW OF
2022

Circle Square Masterplan



RTPI North West
Royal Town Planning Institute

rtpi.org/uk/northwest

Contents

| | |
|---|-----------|
| Chair's Review of the Year | 3 |
| Regional Life | 6 |
| RTPI North West Awards for Planning Excellence 2022 | 7 |
| Education, Careers and Mentoring Task Group 2022 | 16 |
| Newly Elected and Associate Members | 20 |
| RTPI North West Dinner 2022 | 21 |
| Wedding Planners | 24 |
| North West Planning Aid in 2022 | 25 |
| LPA Champions | 27 |
| RTPI North West Young Planners | 29 |
| Regional Research | 32 |
| Policy and Research Task Group Report 2022 | 33 |
| Looking Forward | 35 |

Chair's Review of the Year



The Boss



Welcome to our 2022 Annual review. As I write this, I feel there's something cathartic about reflecting upon the year as the long nights begin to draw in and the festive period inches closer. It's important to take a look at the key events from this year, and the twists and turns along the way leading us to where we sit now. This paves the way for a new year, fresh of challenge and optimism. Now is an apt time to take stock and then define our direction for the year ahead.

It has been a challenging and rewarding year for the RTPI North West, as it has of course for many other organisations. We started the year fatigued at the thought of what uncertainty the Pandemic had in store next, but in fact the global landscape has somewhat changed in other unexpected ways. We have seen war in mainland Europe for the first time in most of our lifetime's, we have seen the passing of the Queen, whilst the economy has gradually meandered towards a new low of uncertainty and apprehension. Yet as an industry we stay resolute.

The RTPI North West group of volunteers have busied away to support members across the region. I'd like to take this moment to thank every single one of you for your commitment to not just the RTPI, but to making town planning a better and more cohesive industry to work in. Most encouragingly from this year, has seen the return of numerous in person events. Many of which we have Jo Harding and Bev Watson to thank for coordinating. Sam Leuty-Milner has taken lead of the Education, Careers and Mentoring group which returned to schools and universities this year to inspire the next generation of planners. Groups such as the Young Planners and Planning Aid England remain active within our network.

Other notable landmarks include the LPA Engage Initiative which saw volunteers engage with LPA representatives to establish four key areas of support needed for public sector planners being training, staff recruitment & retention, championing planning and mental health and wellbeing. This has defined the spectrum for a package of support measures until the end of 2023.

In my year as Chair, one memorable moment amongst many was the President's visit to the region at the end of August. Over just two days we covered this vast region to see some of the best cases of planning practice. We visited Whitehaven Bus Station, a long stalled site where a sensitive and well-designed development has created significant community benefits. We saw the overall national award winning project by Preston City Council and Hive Land & Planning who presented their trailblazing brownfield regeneration strategy aimed at unlocking stalled sites to deliver housing growth in the city centre. The next day took us to Crewe where we saw a strong focus on town centre regeneration in preparation of the HS2 and then onto RHS Bridgewater- a blossoming project which needs no introduction. It was energising to see the impact that planning has had on our communities and the power we have to make people's lives better.

In moments of reflection it is also important to mark great achievements and reasons to celebrate. **John Knight** who leads the Policy and Research Group entered his 50th year of being associated with the RTPI, many of which he has devoted to the institute as a volunteer. In celebration of this, we are delighted to create a small but meaningful student bursary scheme in John's name to support aspiring planning students who are in need.



Celebrating 50 Years

This year we on the RTPI NW RAC are all celebrating one of longest serving RTPI members - John Knight. John joined the RTPI back in 1972 and has spent most of that time actively volunteering and supporting the work of the RTPI. John has served as the Chair of the Region on three separate occasions in 1984, 2011 and 2012, however, he has supported the region in many other ways including being the lead on a number of task groups and panels and by just being there as an experienced friend to other newer or less knowledgeable members.

John has also served the RTPI and its members at a national level through work on the Professional Practice Committee, the Accreditation Panel and the Education Committee. However, one of John's key roles has been supporting the general public and local communities through Planning Aid, providing a beneficial impact in the NW and often helping to foster a positive perception of the profession in the area. John has clearly gone above and beyond the call of duty to dedicate his time and resources to the RTPI and all of its members and this should be celebrated by everyone!



Celebrating 30 years of Bev!

In April, **Bev Watson** marked her 30th year with the RTPI. Her contribution to our network cannot be understated. We're very lucky to have her and she has been the glue holding our little community of planners together for some time.

We should be particularly excited about the opportunities that 2023 will bring. I now pass over the medal (yes there actually is a medal) to **Emilly Kitching Bower**. Emilly is a passionate planner with a well-rounded view. She will tell us more on what she plans for the year towards the end of this document and I look forward to seeing her knit together a fantastic group of volunteers.

I hope you enjoy reading this review, and I wish you the best for the year ahead.

Kieran Blaydes
RTPI NW Chair 2022

Thank you to this year's...

Sponsors:

- CMS Law
- Hive Land & Planning
- Kings Chambers
- Curtins
- LUC
- Bellway
- Lambert Smith Hampton

Hosts:

- Barton Willmore now Stantec
- WSP
- Pinsent Masons
- DLA Piper
- Arup

Regional Life

.....

In this section we look at what the North West Region, its planners and volunteers, have achieved in developing and rewarding, best practice in 2022

RTPI North West Awards for Planning Excellence 2022

Hot on the heels of the 2021 Awards, it was 'all change' for the 2022 Regional Awards calendar. To better align with the National Awards on 30th November, regional entries were due in much earlier (by 11th March) this year, and despite the short notice, we still received more submissions (18) than in 2021 (16).



A total of 13 entries were shortlisted across the following categories:

- ★ Excellence in Planning for a Successful Economy
- ★ Excellence In Planning for Heritage and Culture
- ★ Excellence in Planning for Communities (Small Schemes)
- ★ Excellence in Tech within Planning Practice
- ★ Planning Authority of the Year
- ★ Small Planning Consultancy of the Year
- ★ Young Planner of the Year

The most hotly contested category this year was the newly launched 'Small Planning Consultancy of the Year' category, open to those with five or fewer Chartered Town Planners (and replacing the 'Private Sector Team of the Year' category from 2021).

Six superb entries were received, reflecting the high quality and diversity of some excellent small practices operating across our region.

For the first time in what felt like an eternity, the judges were able to get out on site without restrictions this year, visiting Manchester, Salford and Stockport on 13th April (on one of the wettest days of the year!). But reflecting the shift to hybrid working, interviews and presentations were still held over MS Teams on 6th and 9th May (on some of the hottest days of the year!).

Our fantastic judging panel included representatives from across the public and private sectors:

- **Matt Dugdale** (Chair; Nexus Planning),
- **Ben Vickers** (Cheshire East Council),
- **Bob Phillips** (Urban Imprint),
- **Chris Findley** (Retired),
- **Colin Parry** (Homes England),
- **Hannah Payne** (Cheshire Constabulary),
- **Jake Crompton** (Countryside Partnerships),
- **Kathryn Brindley** (Halton Council),
- **Louisa Fielden** (Avison Young),
- **Paul Shuker** (LSH); and
- **Rebecca Dewey** (Oriell Planning).

★ WINNER

Excellence in Planning for a Successful Economy

Circle Square Masterplan, submitted by Deloitte LLP

The winners were announced at the RTPI North West Annual Dinner on 24 June (at the Hilton Hotel on Deansgate in Manchester), and kindly sponsored by Lambert Smith Hampton (LSH).

In partnership with Bruntwood, Vita, Feilden Clegg Bradley Studios and Planit-IE, Circle Square is a leading example of successful regeneration of brownfield land. The completed commercial phases are largely fully occupied with a range of businesses from local to multi-national. Circle Square offers the opportunity for businesses to grow organically and take space as appropriate. The largest new green space in the city for a generation, Symphony Park and Gardens enables community wellbeing for residents of the residential phases, and at the same time encourages public interaction with the space.

The judges felt this was a very interesting regeneration project which piqued their attention given the economic, repurposing of a key site, the political context, including the impetus towards the Northern Powerhouse, Levelling Up Agenda and creating a truly successful mixed-use residential and commercial development. The site's context and regeneration stems from the closure of the BBC studios and its demolition in 2014, and the sensitive political decision to move the BBC to MediaCity in Salford. The site was subject to several concepts; however, the scheme today has been delivered through planned intervention that commenced in 2013. This was achieved through solid and resilient town planning approaches that lead to a Strategic Regeneration Framework (SRF) that created a vision and objectives for the site that was later adopted by Manchester City Council (MCC). The vision was then taken forward by Bruntwood through a concept masterplan in 2015, which was later advocated by MCC, and through collaboration. A clear delivery plan has been curated to allow the proposal to be brought to market so successfully.

The panel recognised the bold move by the project team, MCC and owners to reinvent this important gateway site and its purpose, contributing to the renaissance of this area of the city centre. The proposal providing a new residential product (Build to Rent) and unique offer which complements other existing uses but and will define future interventions and regeneration in this important corridor to the regional hub.

The panel were also impressed by the near full occupation of both the residential (Build to Rent and student) quarters and the supporting commercial uses, which add to the vitality and place making of this new neighbourhood. Despite only being completed shortly after the cessation of Covid-19 lockdowns in late 2021, the scheme is already a thriving part of the city centre and, with future phases planned, is a credit to interventionist and plan led spatial planning system. A worthy winner of this category.



★ WINNER

Excellence in Planning for Heritage and Culture

RHS Garden Bridgewater, submitted by Barton Willmore now Stantec

The site of RHS Garden Bridgewater presented significant challenges in planning terms, with policy and technical constraints. Yet its fascinating heritage, resultant physical qualities and location make it eminently suitable. The delivery of the garden was realised because of a strong vision and masterplan, a successful delivery partnership between the RHS, Salford City Council and Peel L&P, and a planning strategy that brought engagement and community benefits to the forefront of the process. Other partners included Arcadis, Hodder & Partners, Tom Stuart-Smith, Gillespies, TEP, TTHC, RoC, Hoare Lee and RPS.

The judges were overwhelmed by the transformation needed to create RHS Bridgewater; taking a neglected garden of a former country house (Worsley New Hall demolished in the 1940s), which had been used as a small commercial nursery located in the Green Belt – to a national visitor attraction. The quality of the new build visitor centre, repair of former walled garden, conservation of the on-site listed buildings and creation of a reimagined landscape are of the highest quality.

The scheme enhances the health and wellbeing of the users and wider area, encouraging growing of food and healthy eating. Throughout, there continues to be fantastic engagement with local people, bringing back into use a site for significant public benefit – with the added benefit of ‘Salford free Tuesdays’ where local people could enter for free while the garden was being established. The submission also demonstrates working with children, schools, residents and the RHS school of gardening – during the scheme development and in the post-completion legacy phase. And the accessibility and links with public transport are commendable.



The scheme highlights how a planner led team in the application process was multi-faceted and significant to its success. This was supported by a pre-application engagement strategy, an example of a collaborative approach and partnership working with the City Council and Peel L&P.

The scheme demonstrates a number of mitigating actions to assist with climate change and the development has secured the future of the heritage assets within the complex.

Overall, the scheme displays the highest levels of community engagement, leadership and team working, with the incorporation of sustainable design which have proved fundamental to the success of the delivery of the scheme. The scheme showcases the importance of proactive planning and development within the north-west region and has created an asset for the people of Salford, Greater Manchester, and wider nationally. A truly remarkable winner of this category.

★ WINNER

Excellence in Planning for Communities (Small Schemes of 50 units or less)

Marple Dale - Stockport, submitted by P4 Planning Ltd

P4 led the redevelopment of redundant care home buildings within an operational care home site which were surplus to requirements to provide additional housing that integrated with the care home. The buildings, originally constructed as a TB hospital in the 1920s, had been closed and lain vacant for some time, although the newer care home buildings were to remain operational. P4 advised the care operator on the development potential for the vacant buildings and surrounding land which is located within the Green Belt and then achieved consent for the successful developer, Seddon Homes.

The judges felt this is a site which clearly has a complicated and constrained planning context, but the skill and tenacity of the planning consultants to help shape a successful (and integrated) new residential development is clear. The site's location, in the Green Belt offers challenges, but couple this with the requirements of the adjacent nursing home - including a need to retain 24 hour access - and the necessity for detailed negotiations with several adjacent property owners of a private access route, meant that this scheme is an exemplar of where detail counts. It was clearly not a one-size-fits-all approach.

P4 Planning advised throughout the process, from land assembly and sale, through to working with Seddon Homes to achieve the very highest quality scheme. It is clear from speaking with those involved in the process, that open and continuous dialogue with local people and the care home was fundamental to ensuring this small scheme was developed effectively. That is not to say that there was not resistance to the scheme, but the planning process allowed for the developer and their planning consultants to work with the community in a very personal and proactive way (well beyond the statutory minima) to overcome objection and concerns.



The judges' site visit showcased the scheme's quality with eight different house types and well-designed public realm and spaces exhibits. The eventual package of measures, including new access routes and publicly accessible and connected green spaces, were all delivered alongside much needed family homes. The new homes integrate well with the care home and the other neighbouring residential properties. The prime example of this is the refurbishment of the care homes much prized Rose Garden for the enjoyment of both new and existing residents.

This is a scheme that clearly demonstrates the worth of proactive and thoughtful town planning. A worthy winner of this category.

★ WINNER

Excellence in Tech within Planning Practice

St Cuthbert's Garden Village interactive 360 degree virtual exhibition and promotional video, submitted by Carlisle City Council

Covid required innovative approaches to stakeholder consultation and public engagement. To reduce the impact of the pandemic on the momentum of the regionally significant St Cuthbert's Garden Village, Carlisle City Council was keen to capitalise on the unique set of in-house Communications Team technology skills to explore engagement wholly within a digital setting. A dynamic, cost effective, virtual consultation exhibition was created, together with a promotional video. The exhibition has embedded the 'Start with the Park' principle at its core, by being set in a stimulating virtual environment, representing actual much loved green space at the heart of St Cuthbert's.

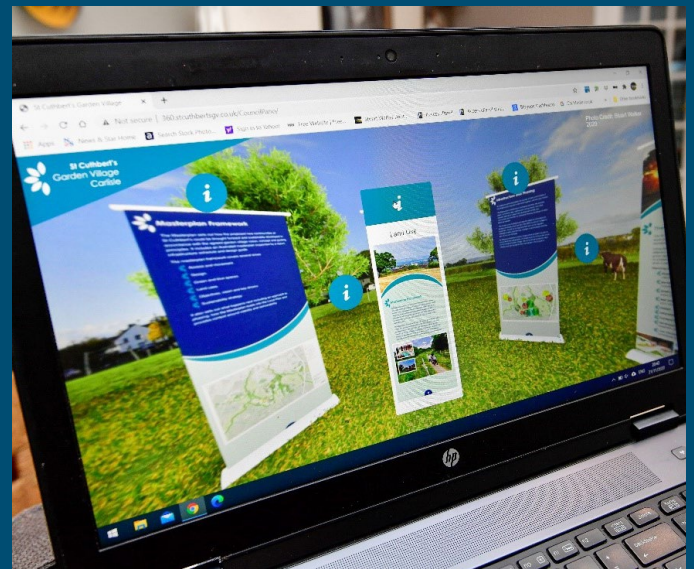
St Cuthbert's is a large garden village proposal (the largest in the north of England), representing a significant southern extension of the city of Carlisle.

Carlisle City Council is preparing a Local Plan for St Cuthbert's, and a Strategic Design SPD to support it. Progressing such a significant proposal to timescale is important to maintaining community engagement and confidence. The introduction of lockdowns and other Covid restrictions prospectively threatened momentum on both the Local Plan and the SPD, as it made engagement and consultation with the public and other interested parties so much more difficult.

Rather than suspending Plan production as some others did during 2020 into 2021, the City Council decided to maintain progress, which meant investigating the potential to create a virtual public consultation exhibition and promotional video so that the whole process could be undertaken on-line. However, the quoted cost of doing this from industry providers was prohibitive.

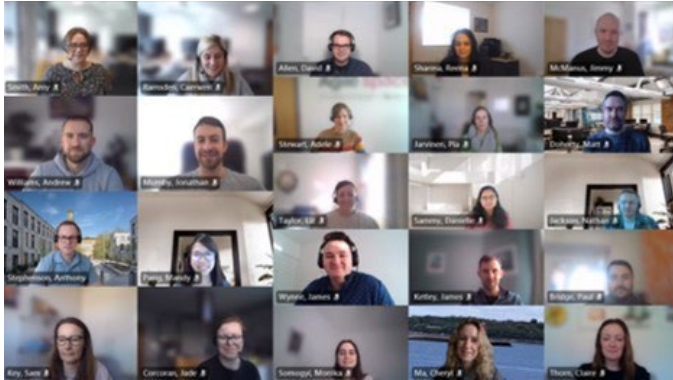
The City Council then turned to its small in-house communications team to look at the potential for them to assist. It transpired that one of the team had experience of developing video games as a hobby, and this skill set proved key to the team being able to undertake the task.

The judges were impressed with Carlisle's determination to find in-house solutions so that Planning and SPD progress could be maintained, and to the way in which to a tight timetable the team stepped up and developed an interesting and usable virtual exhibition and video that successfully engaged the local community in the plan making process on-line. The outcome is that progress on the Local Plan is maintained, and the SPD was able to move towards adoption. A worthy winner of this category.



★ WINNER

Planning Authority of the Year Salford City Council



Salford has seen huge investment in new homes, businesses, infrastructure and public realm. The delivery of major projects such as MediaCityUK, Greengate and the revitalisation of road and riverside corridors has transformed large areas of Salford and had a significant impact on the City's economy and profile. Team Salford are bold, brave, and passionate about creating a better and fairer Salford for all. They have a strong appetite to be the best and have worked tirelessly to capitalise on the investment for the benefit of its communities. They have not stood still and continue to push forward and be innovative.

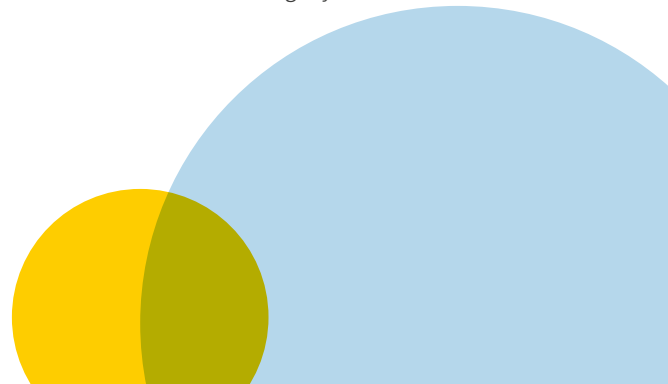
The judges were delighted to review the entry from Salford City Council this year. There was a strong written submission, which scored very well against each of the criteria.

However, the judges were impressed with the presentation, which was excellent, and it was great to meet so many inspiring and enthusiastic planners. Salford have clearly overcome significant change and uncertainty since the re-integration of staff post the Urban Vision joint venture, while successfully navigating the pandemic.

They are at the cutting edge of forward thinking and are applying commercial expertise and innovation to their public sector roots to proactively deliver an all-round excellent and efficient local planning authority service. The sheer range of initiatives that they are taking across their Development Management and Spatial Planning teams is phenomenal.

There is a clear demonstration of team working and evidence of going above and beyond; putting in extra time to improve the service for customers (as evidenced by excellent feedback) as well as the development and wellbeing of staff to build a good team dynamic. Social value is taken seriously and having a broad diverse workforce assists with understanding wider needs and supporting the overarching Council vision.

Overall, Salford acts as a good example of how a close-knit, well managed and motivated planning team can achieve their goals and set the standard for others to follow. They overcome issues with forward thinking and have been recognised as a leading value for money planning service. The RTPI would be delighted for Salford to share their experiences and approaches with other local planning authorities, as there is some truly remarkable work being done (including use of Artificial Intelligence, for example) and as such, they should be heralded as a beacon of success. A truly remarkable winner of this category.



★ WINNER

Small Planning Consultancy of the Year **Urban Imprint**



The Urban Imprint team have worked hard over the last decade to create a multidisciplinary practice with an exceptionally diverse portfolio and a varied base of regular clients. Their personable approach encourages effective engagement with the planning system at all levels, with inclusive and representative results. The company propagates a culture of collaborative working and flexibility to support the needs of staff to encourage them to be the best version of themselves through training and the exploration of personal interests. Overall, Urban Imprint intend all work to be based on a commitment to providing quality advice through integrity and care.

It was very clear from the submissions to this award category this year that there are some excellent small planning consultancies operating in the North-West of England, and so selecting a “winner” was a challenge for the judges. That winner had to have something extra special.

That category winner is Urban Imprint. It is a small consultancy with a team of five, including three planners and one student planner, operating at the interface between planning and urban design. The range of work the consultancy undertakes is extremely varied, and their interaction with other professionals is exemplary. There was strong evidence of client satisfaction, and of commitment to supporting communities through the maze of professional jargon and technical complexity. We also saw strong commitment to educating the next generation of planners through links with the universities and the RTPI.

The consultancy is celebrating its tenth year, and it was very clear that its success is founded on strong teamwork, a culture that is supportive and inclusive, and real enthusiasm for the job of planning and place-making. It is a worthy winner of this category award.

★ Highly Commended

Small Planning Consultancy of the Year
Hive Land & Planning

★ Commended

Small Planning Consultancy of the Year
Ruth Jackson Planning

★ WINNER

Young Planner of the Year

Nia Borseley (Fisher German)

Through a broad range of general practice work, Nia has shown a real flair for creative solutions from farm diversification schemes to listed barn conversions, including a reputation as the go-to planner for dog exercise areas. She has a passion for professional development, is self-taught in the Welsh planning system and has demonstrated a real tenacity for business development across Cheshire and North Wales. Through the RTPI and the NFU, she is using her platform to inspire young planners and engage the agricultural industry in the vital role planning plays in the future of farming and land development.



The judges are delighted to announce Nia as the North West's Young Planner of the Year. Nia is a unique candidate, specialising almost exclusively in rural planning, and is clearly a great advocate for the North West's farming community. Her understanding of planning policy is clearly advanced, which she demonstrated through permissions she secured for numerous schemes including barn conversions and dog exercise areas. These could not have been achieved without successfully navigating complex policy restrictions including the UNESCO Jodrell Bank Telescope Zone and Green Belt. The judges were impressed by Nia's commitment to professional development. Based in Chester, Nia has clients in Wales and has quickly become Fisher German's specialist in Welsh Planning policy/regulation. She is even learning advanced Welsh during her spare time.

Above all however, the judges felt that Nia was an exemplar role model for other young professionals. It is this area in particular which ultimately saw her excel above the other candidates.

Nia clearly feels passionate about the farming community and improving the relationship between farmers and planners. This shone through during her interview. It is no surprise therefore that Nia is clearly respected within the farming community, chairing Betws Yn Rhos Young Farmers and being Clwyd County Representative for the National Young Farmers. She was also selected by the National Farmers Union to one of only 11 NFU Young Ambassadors and the only planner. The judges were delighted to hear how Nia was raising the profile of the RTPI through her voluntary work with these organisations.

An exceptional North West Young Planner of the Year, and we wish Nia the very best of luck at the national awards.

★ Commended

Young Planner of the Year
Danielle Nevin
(Hyas Associates)



★ Commended

Young Planner of the Year
Ben Thornley
(Cassidy + Ashton)



★ WINNER(s)

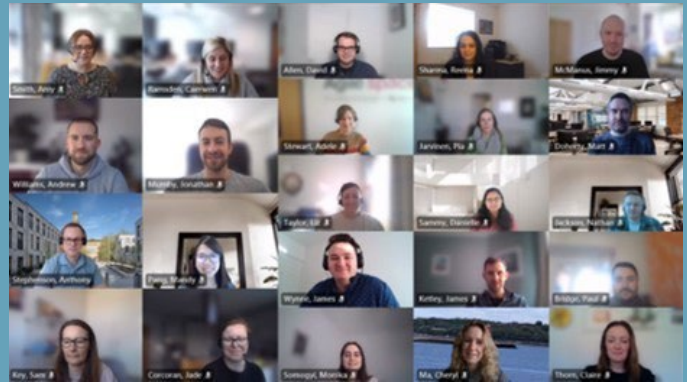
Joint Best in Region

**Salford City Council (Planning Authority of the Year) and
RHS Garden Bridgewater (Excellence in Planning for Heritage and Culture).**

It was a really difficult decision this year to choose an overall winner. We had some truly outstanding projects and people of the very highest calibre.

The judges found the work and transformation being undertaken in Salford, both by the local planning authority and by developers of projects such as RHS Garden Bridgewater, as truly remarkable. The judges felt it far too difficult to separate the two winners.

A planning balance had been struck. Everyone involved in Salford should come away a winner. Congratulations to everyone involved.



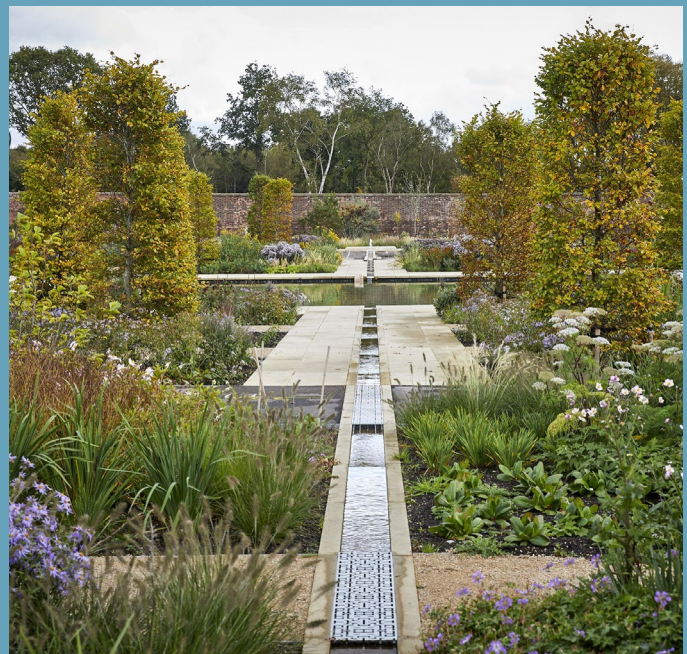
**The RTPI North West thanks
Lambert Smith Hampton for
sponsoring this year's awards.**

The high quality of finalists this year made selecting the winners challenging and the RTPI is grateful for the time and effort put into Awards submission.

RTPI NW Awards Task Group Leader Matt Dugdale, commented:

"We're excited to celebrate, and showcase, the achievements of the people and projects helping to make North West region a fantastic place to live and work. The standard of award entrants this year was exceptionally high, and my congratulations go to everyone who received an award or a commendation.

Good luck to all our regional entrants who have been shortlisted at the National Awards on 30 November!"



Education, Careers and Mentoring Task Group 2022

The Education, Careers and Mentoring task group has continued its hard work to ensure we maintained our engagement with members throughout the region in 2022, as well as finding various means to still engage with those who aspire to become a planner in the future. The task group has predominantly utilised the last twelve months to lay a foundation to achieve its aspiration of further extending its reach across the region. Acknowledging the need to engage with educational institutions of various backgrounds throughout the North West, in order to expose students of differing academic levels to the RTPI and the world of planning. By exploring opportunities with other organisations and developing stronger relationships with authorities and relevant public bodies, the group are looking to establish a stronger network and improve our exposure to potential events and opportunities of interest.

One such opportunity has been established since developing a relationship with the careers and enterprise team of the GMCA [Greater Manchester Combined Authority]. This has provided us with access to details of careers events throughout the Manchester region, as well as the opportunity to get further involved in their 'Bridge' initiative. 'Bridge' looks to provide a clear network and link which, in the authority's own words, will close "the gap between the boardroom and the classroom". Through this process there are numerous opportunities for the task group to explore and we are currently in the process of understanding which would be best to pursue; based on the resources we have available as well as the outcomes they may provide for the RTPI and our members. However, we are hopeful that this will help us go some way in achieving the institutes aspirations as part of the BALANCE (Build A Legacy And New Community Equality) project and allow us to access educational facilities and communities that are recognised as underrepresented throughout the region.

The professional team at GMCA have also offered the opportunity for us to engage with similar projects in neighbouring authority areas throughout the North West. However, initially the group are looking to build an established relationship and structure within the initiative at the GMCA, before we begin to engage with these other locations in late-2023 and 2024.

In the last few months the task group has also developed a stronger relationship with planning schools at both the University of Liverpool and the University of Manchester. Further to the partnership protocol that the group has in place with the academic teams, there is an aspiration to work more directly with the students themselves. Recent engagement has allowed the group to engage with the student's planning society at the University of Manchester in the hope of creating joint events, alongside the Young Planners. There are also ongoing discussions in regard to offering our support with a careers based module and hosting a lecture at the University of Liverpool in the near future. Both of these projects are in their infancy but already beginning to offer exciting opportunities. The task group are looking forward to seeing how these develop in 2023.



World Town Planning Day Schools Competition

The task group are pleased to announce that last year's national World Town Planning Day Schools Competition winner was an entry from the North West! Lexie Byatt of Broughton Hall Catholic High School in West Derby, Liverpool impressed the judges with her submission of "My Perfect Eco-friendly Community (Eco-Amo)". Students were tasked with discussing a topic linked to COP26, with a focus on climate change, urban regeneration and innovation. They were asked to envisage themselves as a keynote speaker at a future conference, and from a town planning perspective develop their own idea for a new sustainable community near to where they live.

Once again volunteers within the group will be supporting and judging entries for the World Town Planning Day school competition. Based on the success of previous years, and the fresh perspective students can have on the planning world, we are looking forward to the submissions coming in!

Moss Madden Awards

The task group was delighted to take on judging the Moss Madden Awards for undergraduates in November 2022. The post graduate awards are anticipated to be judged in December and announced in early 2023.



★ WINNER

University of Liverpool

Hanna Jones

The relationship between pregnant women, new mothers and public spaces, as a case study approach of Liverpool.

The judges felt that the student had used a good methodical approach for investigating an international issue, brought into a North West context by utilising the City of Liverpool as a case study. The predominant objective of the project was to understand whether gender mainstreaming had been successfully implemented into planning policy, in order to create gender-inclusive spaces within the urban landscape for pregnant women and new mothers. Underpinned by a case study approach, the student used questionnaires to ascertain a subjective understanding from a selected group of women on their experiences with public spaces including pathways, toilets and bus stops. The data was collected from expectant mothers as well as new mothers (parent to a 0-24 month old child). The research also included interviews with eight planners in order to obtain a planning industry perspective on the subject.

As an outcome of the research, the author felt that evidence from the questionnaires and interviews demonstrated that gender mainstreaming had not been successfully implemented into local policy. As a consequence, it was clear from the responses that pregnant women and new mothers generally agreed that they could not access public spaces with ease and the facilities that they required.

The author also provided recommendations including incorporating improvements in educational teaching on inequality in planning and design course in the UK, as well as gender specific policy to be mainstreamed into planning.

Runner Up

University of Manchester

Ella Hines

Urban Design for Communities: Investigating the Liveability of the Urban Regeneration Area – Ancoats and New Islington.

From the judge's perspective this dissertation offered an interesting discussion and perspective on the subject of liveability, in a location that has seen significant redevelopment in recent years. Utilising various methods of analysis, including site surveys, semi-structured interviews and online surveys, the judges were impressed with the way in which the author assessed and interpreted the perspectives of local residents and the implications that the regeneration of Ancoats and New Islington has had in regards to the liveability of the area.

As outlined by the researcher, the idea of liveability has been well-discussed in recent years. However, without a set definition, there is a general understanding that it is characterised as something that generally improves residents' well-being. Acknowledging that there is a potential gap in the academic literature on this subject matter, the author was able to provide an insight on the effectiveness of a regenerations scheme in providing a liveable neighbourhood.

The research found that the regeneration of Ancoats and New Islington had improved certain services and facilities, such as: residential amenity, transport and social spaces. However, it was found that certain aspects such as: sense of personal safety, extensive pedestrianization and high quality green space were still missing. As a consequence, this had an effect on whether respondents felt that the location was a 'liveable' environment.

The author felt that the research provided a clear demonstration of how there was a renewed need for the development industry "to prioritise community well-being over development profits, because a liveable neighbourhood that enhances quality of life for all will inevitably be profitable in the long-term."



‘Coffee with a Planner’

Further to last year’s success, the task group has looked to continue to develop the ‘Coffee with a Planner’ initiative. This project looks to provide opportunities for students, as well as those who are seeking a change in career, to have informal mentoring with practising planners in the North West. The conversation can be on anything, but is anticipated to centre around: career advice, feedback on CVs or more about what planners do in their day-to-day roles. The task group have sought to match planners who were working in fields that those who have applied were interested in; for example, urban design or strategic planning. Both the students and the planners who have previously volunteered have found the experience overwhelmingly positive.

Within the next twelve months the task group will be looking to diversify our strategy and the way in which we promote this project. The aim of this will be to try and engage with more professionals that are looking for a change in career, as well as becoming more apparent within the Universities. This is so that we can take a more proactive approach in targeting new students entering their studies, in the hope of seeing more engage with the programme and the RTPI more widely.

Acknowledgements

The task group would like to use this opportunity to extend our thanks to the volunteers that have supported the task-group during the last twelve months; attending careers events and presenting at various schools throughout the region. It is also great to acknowledge and thank the judges of the Moss Madden Awards: Georgina Blackburn, Chris Wilson and Ben Vickers for their continued support and willingness to be involved in the awards.

Could you be an Ambassador?

As previously mentioned, the task group is aspiring to extend its reach across the region. As a consequence and in order to support this, we are looking for RTPI members to volunteer themselves and become an Ambassador. As part of the institutions Future Planners initiative, Ambassadors will be asked to attend educational events, such as careers fairs, to work alongside teaching staff and promote the profession of planning. If you would like to represent the RTPI and are comfortable talking about your career in planning, then please get in touch with [Bev Watson](#).

These roles can be extremely rewarding and offer you the opportunity to provide an insight into your day to day job to students who may not have even considered or heard of planning before.



Congratulations to our newly elected Chartered and Associate Members!

Katie Pearson Lake District National Park Authority
Jonathan Maginness AXIS Planning
Samuel Pierce Persimmon Homes - Manchester
Victoria Coleman WSP Group - Manchester
Ellie Forshaw Tetra Tech (WYG) - St John Street London
Zoe Reynolds Eden Planning
Michael Sproston PWA Planning
Michael Dinn AMS Planning and Architecture Limited
Clover Long GL Hearn Ltd - Manchester
Laura Amy Pennington CBRE Ltd - Manchester
Mandy Poon Avison Young - Manchester
Eleanor Rawsthorne South Lakeland District Council
Emma Dyson Liverpool City Region Combined Authority
Courtney Evason Steven Abbott Associates LLP
William Kerr Gillespies LLP - Hale
Rachael Leather PWA Planning
Maryam Watson Building Design Partnership Ltd
Carolyn Attwood-Parry Peacock and Smith Ltd - Manchester
Philip Carter Environment Agency - Preston
Jordan Balazs Cassidy & Ashton Group Ltd
Christopher Binns AECOM
Caroline Fearon Allerdale Borough Council
Emelia Jeffery Redrow Homes
Hairul Sharani Mohd Radzuan University of Manchester
Jack Smith Mott Macdonald
Callum Valentine Ruth Jackson Planning Ltd



RTPI North West Dinner 2022

So, this year it was all a bit new, we met in the Summer to have our Annual Dinner. As part of the changes to the annual award process, the Dinner took place in June, and is likely to continue to do so in future. So, everyone donned their Dinner attire and braved the heat. But it seemed to work, and the Dinner was in my opinion, a success. Bev had, as always, done a remarkable job at organising the Dinner and we would all like to thank her immensely for all of her work.

The evening saw more than **360** people gather at the Deansgate Hilton to network, socialise and enjoy themselves. We were all entertained by singing, violin playing and river dancing, including from some very impressive dancing from some of our very own planners.

The Dinner also saw the celebration of the RTPI NW Regional Awards, with many in attendance receiving awards for the work they had been doing over the previous year. More details of the awards and the winners can be found elsewhere in this Review.

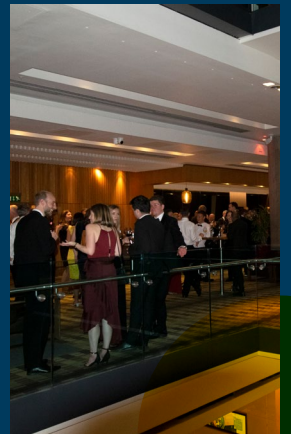
We would like to thank all of our sponsors without whom we would not be able to provide such an amazing social event, so huge thanks to Hive Land & Planning, CMS, Kings Chambers, LUC and Curtins.

And finally, a massive thank you to all of you who turned out for our Annual Dinner. We hope that everyone who attended enjoyed themselves and we look forward to seeing you all again in 2023.



Find more information on next year's Annual Dinner at the RTPI Events Page: [RTPI | NW Annual Dinner](#)





Wedding Planners

Congratulations to all our committee members who tied the knot in 2022.



Incoming Chair **Emily Kitching & Charlie Bower**
28th August 2022 *Oxford*



Katherine Reynolds & Ian Gilbert
14th May 2022 *Stockport*



Emma Yemm & Matt Dugdale
11th March 2022 *Tyn Dwr Hall in Llangollen*



Sam Leuty-Milner & Laura Sherlock
25th June 2022 *Penarth Fawr, Criccieth*

North West Planning Aid in 2022

The start of 2022 saw the retirement of Julian Jackson. PAE relies upon the input, enthusiasm, and knowledge of its volunteers to be effective, and few volunteers have made as valuable a contribution to PAE as Julian.

As Regional PAE Representative for the North West and Chair of the North West Task Group, Julian has always taken a proactive approach to identifying and delivering opportunities for our volunteers to help local communities engage with the planning system. We wish him a long and happy retirement.

The Task Group also saw the addition of two new volunteers as student representatives from the two RTPI accredited planning schools in the North West – The University of Liverpool and The University of Manchester. The two students have assisted with forging closer relationships between PAE and the universities.

In October 2022 Planning Aid volunteers visited the two planning schools to deliver an introduction to Planning Aid England to undergraduate and postgraduate students studying a variety of RTPI accredited courses. The volunteers came from backgrounds in consultancy, enforcement, and Local Plan writing and had a range of experiences on a variety of Planning Aid England projects.

The volunteers were also able to offer insight into different sectors of the industry and advise on career options. The visits showcased the variety of work Planning Aid England is involved in across its four workstreams, and how opportunities exist for planners to get involved no matter what sector they pursue a career in. The volunteers have been invited back to both planning schools to talk to other classes in the next semester. It is likely Planning Aid England will seek to repeat the presentations each year to students who are about to enter the planning workforce.

This will hopefully help maintain an enthusiastic intake of early-career volunteers and provide some vital experience to help volunteers choose their career direction.

Elsewhere, work on Neighbourhood Plan preparation in the region continues to slow, but there are some encouraging examples of groups re-forming, new groups submitting to become designated, and others successfully securing funding through the government's Pathfinder project. Planning Aid continue to be on hand to offer support to various groups throughout the region.

In November, Planning Aid volunteers delivered an online training event for PAE volunteers on 'Planning for Neurodiversity and Physical Disability'. On occasion, Planning Aid volunteers may be offered casework or other volunteering opportunities involving people with neurodiverse conditions and/or physical disability. To ensure that the best service is provided, it is important that volunteers have an understanding of the relationship between neurodiversity, physical disability and the built environment. The free webinar included practical tools that may aid discussions with the development industry and/or local authorities.



Planning Aid England
Engaging Communities in Planning

Planning Aid has also sought to deliver further community engagement assistance and volunteer training events throughout the year. Unfortunately, the community engagement assistance was paused as a result of the Stockport Local Plan being put on hold. A volunteer training event relating to an update on the Liverpool City Regional Spatial Development Strategy was also delayed to 2023 due to being put on pause as a result of changes in government.

Planning Aid England in the North West looks forward to a busy 2023, where we will be celebrating 50 years of Planning Aid.

Become Involved

If you want to be involved in supporting local people with planning issues, then why not become a Planning Aid volunteer? To do so you first need to register on the RTPI website using the following link:

<https://www.rtpi.org.uk/planning-advice/volunteering/how-to-apply/>

If also you want to help organise Planning Aid activities in the Region by being part of the Task Group, then contact **[Bev Watson](#)**

LPA Champions

This year we have reignited our drive to support LPA's. This started way back in 2019 when we wrote to every LPA in the NW to establish a 'Champion' to act as the point of contact between each LPA and the RTPI NW.

Earlier this year, we reached out to the LPA Champions to signal our intentions to work with them to offer support at a time when it is well known there is a resourcing and capacity issue.

From this, the volunteers have worked hard to develop a strategy which will guide a variety of initiatives to support LPA's. Here is what has happened so far:

Roundtable

In February, the RTPI NW hosted a roundtable with several LPA Champions to discuss some of the key issues facing LPA's across the north west and how we could collectively tackle these issues. The key issues that arose centred around staff recruitment and retention, with a general theme of planning officer's being lured to the private sector and LPA's left struggling to replace them. There were evidently many wider issues and challenges faced including further specialist training required for more junior staff, mental health and wellbeing support needed particularly as a result of Covid-19, and a change in the perceptions of being a planning officer in local government.

LPA Engage Plan

Based on the key issues raised during the roundtable, the RTPI NW published the LPA Engage Plan in June this year. See the document on the RTPI website [here](#). The plan first outlines four key areas: 1) Staff Recruitment & Retention; 2) Training; 3) Promoting the Public Sector & Championing the Value of Planning; and 4) Health & Wellbeing.

Under each area, the plan identifies actions and objectives on how it intends to help provide support in these areas. It acts as a template for events the RTPI NW will look to deliver to support LPA's with reference to other organisations it will look to work with.

LPA Best Practice Promotional Document

To help shout about some of the great work planners in the public have done, the RTPI NW worked with a number of LPA Champions to collect case studies of best practice. These were collated in a glossy document published in August. This can be seen on the RTPI website [here](#).

The document was launched on the RTPI website and circulated on social media. It received a very positive response, raising awareness of not just the good work carried out by the public sector which does not usually attract plaudits, but promoting the discussion around how we as an industry can support the



public sector.

LPA Training Programme

In October 2022 a tender process was launched to identify training providers to deliver a tailored training programme in 2023 for planners working in the public sector. The RTPI NW are currently working to finalise the delivery of the training programme which will be launched shortly.

Next year...

Well, next year is another exciting chance for the RTPI NW to work with the LPA Champions and deliver the LPA Engage Plan. The 2022 Chair will form a new group of volunteers to deliver this and have a number of plans in place already. Here is a snapshot.

- **LPA Design Training Programme:** Following on from the tailored LPA Training Programme which is being delivered in early 23, a design focused training programme is planned for the second half of 23. This will look to address some of the more technical skills around assessing and improving the design of new development.
- **Mental Health and Wellbeing Support:** The RTPI NW are making plans to provide a mental health and wellbeing course in early 2023 for LPA staff.

- **Public Practice:** Public Practice is an organisation that places private sector property professionals into public sector roles usually for a 12 month period to boost resources within the public sector and allow private sector professionals to gain experience working in the public sector. The RTPI NW helped promote their work in summer 2022, and will look to play a more active role supporting them in 2023.
- **LPA Capacity Research Project:** A Two part LPA Capacity research project has been undertaken by the RTPI, however in 2023 the RTPI NW are exploring taking this a step further with a regional based research project focusing in depth on the challenges our LPA's face and some of the solutions we can explore.

Become Involved

Any of this sound interesting? We'd be delighted to welcome on board anyone who feels they want to help out and make a genuine difference. Get in touch with [Bev Watson](#) for an initial discussion and let's see what we can achieve in 2023!

RTPI North West Young Planners 2022: In-Person Priority

Moving into 2022 saw change in the Young Planners steering committee. There was a new Chair and Vice Chair with a key aim to prioritise in-person activities to unite young planners across the North West. The decision was also taken to expand the committee, and subsequently, five new members with fresh ideas joined to assist in progressing activities and support for the young planners network.

Springtime brought brighter weather and with it a number of Young Planners-led outings.

The first coincided with 90 years since the infamous Kinder mass trespass - the sun shone on all those who made the pilgrimage, including attendees at our walk organised by Ian and guided by David Toft from the Hayfield Kinder Trespass Group, as well as other groups of ramblers, wanderers, and even activists who took their swimming kit for a reservoir trespass event to highlight the plight of Right to Roam. Ecologist James Richardson from Wardell Armstrong LLP joined to provide insights on the biodiversity impacts of land use in the Peak District area, as did Caroline Lucas MP who stayed in the area after her presentation at the Kinder anniversary celebrations in Hayfield the previous day.

This was soon followed by an 'Infrastructure Safari' event for which commuter cyclist, blogger and Walk Ride Greater Manchester founding member Nick Hubble plotted a late-afternoon pedal around Manchester and Salford. Organised by Ian, the idea was to explore the local highway network and public realm 'in the wild', to experience first-hand how it feels to navigate on two wheels. Some of us tried out Transport for Greater Manchester's partnership cycle hire scheme by Beryl Bikes, which is being rolled out across the city and region, as we saw a sample of the good, bad and ugly infrastructure from the new and pioneering junctions to the outmoded and disjointed protection.



You can find longer reviews of the Kinder and Safari events here: [RTPI | Latest updates](#)

At the end of May, WSP hosted the North West's first in-person APC event in a while. More than 30 delegates progressing towards chartership listened intently to our excellent guest speakers, Clare Pegg and Joanne Harding, who are both APC assessors brimming with tips for applicants. The event, arranged and chaired by Ian, aimed to support future APC applicants with the advice and tools they need to prepare a successful written statement as part of their submission to become elected as chartered members of the planning profession and progress with their careers.



In October, Ian then arranged and chaired the Planning for Gear Change event as part of the main RTPI NW CPD programme. Speakers were invited to discuss and present on various aspects of active travel and modal shift delivery in light of the eponymous 2020 policy document. Across the day-long event, we heard about theories, research, case study examples, and practical steps to enable active travel through the planning system, including a whole-system approach; Greater Manchester's Bee Network progress; inclusive walking, wheeling, and cycling; Active Neighbourhoods; the Gender Equality Toolkit in Transport (GET-IT); Mini-Hollands; 15-minute neighbourhoods; and Active Travel England's role.

In November, Tom hosted the Workload Stress Management event at WSP's office in Manchester. Tom arranged a cognitive behavioural therapist to speak about techniques to overcome the feeling of being overwhelmed, procrastination, unable to turn off after work, poor sleep and excessive worry. Cognitive behavioural therapy is the brain's way of getting into shape, in a similar way that exercise is used to get physically fit. Experiences of stress and worries were shared with the therapist throughout the presentation with simple, effective techniques were shared to provide a more bespoke experience for attendees.

On reflection of the year, the committee has worked hard to build on its successes of the previous year and to host more in-person events. The young planners committee is optimistic for 2023 with more interesting events planned for its network.'

Regional Research

.....

The achievements of North West Planners on influencing policy, the views of regional academics on key issues.

Policy and Research Task Group Report 2022

In terms of spatial planning, both the Liverpool and Manchester city regions sought to progress their strategic plans during 2022.

Within the Liverpool Combined Authority, the preparation of a Spatial Development Strategy (SDS) is a statutory requirement for the city region authorities as a whole. The aim is to set out a strategic framework for the development and use of land moving forward for at least 15 years. So far the Combined Authority has made good progress ensuring that as a City Region it is engaging with the wider community and especially those who do not usually engage with spatial planning. Its public engagements to date have been nationally recognised as innovative.

There have been a number of recent national Government announcements about potential changes being made to spatial planning. The Combined Authority decided in October 2022 that, before consulting further on the SDS, it needed further understanding of the Government's policy direction, timing and implications. Among the matters raised are:

- The recently announced Investment Zones
- The implications for a more simplified planning regime
- Calculating housing numbers across the city region
- Any awaited updates to the National Planning Policy Framework (NPPF).

Work will therefore continue on the SDS and specifically on key tasks that will ultimately support its delivery namely:

- To further develop the supporting evidence base for the SDS and continue to jointly progress the Combined Authority's work on spatial policies and priorities
- To produce a non-statutory Place Focused Strategy which will reflect collective strategic place priorities and embed these into the Combined Authority's approach to place making and funding across the city region.

The examination of the Greater Manchester (GM) Plan is now known as Places for Everyone and is the strategic level plan for the Greater Manchester areas other than Stockport Council which is progressing its own Local Plan. The plan is a joint development plan of the nine districts which aims to determine the kind of development that takes place in their boroughs. This would include maximising the use of brownfield land and urban spaces while protecting Green Belt land from the risk of unplanned development. It will also aim to ensure all new developments are sustainably integrated into Greater Manchester's transport network or supported by new infrastructure.

Hearing sessions for the nine authorities commenced on 1st November 2022 and are expected to run until Spring 2023. Land supply and Green Belt issues are particularly contentious. Three Planning Inspectors are jointly running the hearing sessions before reporting their findings which may not be available until towards later in 2023.

Another combined plan being developed in the region is the Central Lancashire Local Plan by the three Planning authorities of Preston, Chorley and South Ribble. The councils are currently in the process of reviewing and updating their Local Development Scheme with a revised LDS expected. This will update on the expected time frame for the next stage of consultation, the Preferred Options, and subsequent plan stages.

Our region has continued to respond to RTPI consultations about a wide range of subjects during the year. The group has contributed to RTPI led DEFRA consultations on protected sites and species, Landscape Review and Biodiversity Net Gain (BNG) Regulations. The importance and scale of the BNG was recognised and noted including the varied manner in which Planning authorities were responding to the impact of the recent legislation.

It was also recognised that RTPI responses to Government consultations needed to cover the wide range of issues due to its wide and diverse membership.

The task group continued to take an interest in Inclusive Planning and Design (including Neurodiversity). An article by a member of the group was published in March 2022 on the RTPI website entitled "Neurodiversity: What is the Planning profession's role"; she has also given presentations to the RTPI General Assembly and RTPI Wales.

Members of the group discussed and welcomed these initiatives. Another member of the group often working overseas informed the group that he was introducing components of Neurodiversity to plan-making in the USA including Texas.

It was noted that the Levelling up and Regeneration agenda now had some emphasis on the digital approach to Planning. Also a recent RTPI led webinar (held in May 2022) on the subject had provided some useful points. The group also noted the need for some consistency of digital planning systems.

Chosen as a pilot testing area for Government's Model Design Code guidance, Huncoat, Hyndburn has a draft Design Code and is a designated Garden Village. For Sefton, Merseyside the National Model Design Code has a focus on Bootle, where an Area Action Plan (AAP) is proposed and aims to emerge with key aims of regenerating the town and its environs. As part of this process, Sefton Council are seeking to understand how a Design Code can be developed to accompany/form part of the AAP and specifically understand the potential for Design Codes to act as a regenerative tool in areas of deprivation.



The first reading of the Levelling Up and Regeneration Bill took place on 11th May 2022 with the 27th sitting held on 20 October 2022. The report stage has yet to be announced. Some of the likely changes seem to include a clause of the Levelling Up and Regeneration Bill replacing current sections of legislation. Currently, this provides that applications for planning permission should be determined in accordance with the Development Plan unless material considerations indicate otherwise. The emerging legislation would seem to suggest that new national development management policies may now have primacy of decision making.

The “Rural Planning in the 2020s” project was a joint research report co-founded by RTPI HQ and some RTPI regions (including RTPI North West) which also included a number of planning academic staff supported by their universities. This wide ranging study explored significant challenges facing rural communities, including the rural housing market and agricultural sector, and assessed how land use planning can effectively support the delivery of sustainable development in rural areas in the 2020s.

The project details the changing face of rural areas across the UK and Ireland. It identifies key challenges rural communities are facing in the 2020s and issues addressed also include COVID-19, Brexit, and climate change. It also identifies the potential for the countryside to be a site for adaptation.

The project (entitled Rural Planning in the 2020's) looked at the role of planning in rural areas. The project looked at the association between our ever-changing planning system and the future of the countryside. It also explored the effective integration and balancing of economic, social and environmental factors in promoting sustainable development in our rural areas. The research also included the outcome of Rural Planning Research and how important rural planning is when the planning system mainly focuses on urban renewal. The project was led by former RTPI North West RAC member Prof. John Sturzaker, who is now the Ebenezer Howard Chair of Planning at the University of Hertfordshire. The full report is entitled “Rural Planning in the 2020's Main Report: RTPI Research report published July 2022”

The RTPI NW monthly Planning Newsletter would welcome short articles on our activities. Please contact **Bev Watson** if you require further information about the newsletter.



The New Boss



As a busy and eventful 2022 comes to a close and I reflect on this year's many significant events that will stay with us far beyond just this year, I look to 2023 with both

hope and excitement. We have already planned so much for members with a packed year full of CPD events, social activities, our annual awards evening, the president's visit in September and the Annual General Meeting at the end of next year. I can't wait!

Looking Forward

I have been involved with the Northwest region since 2019 and I am both honoured and excited to start my year as chair. My focus is to help our members at all stages in their career expand their horizons and support them through this next year.

I am looking forward to taking on this position after Kieran's amazing work and I am keen to continue the phenomenal initiatives he has progressed over the past year. We are all grateful for Kieran's efforts and leadership which has guided our region through this year of uncertainty. I would like to thank him for his work, as well as the phenomenal RAC and RMB members, without whom we could not have achieved such great successes throughout 2022.

I want to build on this past amazing year, which is reflected within this annual review, and our volunteers should be proud of everything that we have achieved together. I hope we can bring this enthusiasm into 2023 and continue to support all our members.

I would like to thank our members for their continued service, and I would like to specifically thank those who have decided to step away from volunteering – Tillie Baker, Colin Parry, Florence Hewett, Celine Houghton, Amy Littlejohns, Olivia Pemberton, Hannah Payne and Maria Sam. I would also like to thank John Knight for his phenomenal 50 years of service who has also decided to step down from his extensive voluntary commitments. Thank you all for your amazing dedication.

It is an exciting time within the planning industry with the levelling up agenda playing out across the country, with exciting plans in place to create meaningful and positive change within communities across the Northwest.

However, planners are facing many challenges with the public sector operating on reducing funding and the changing government leadership.

I would like to encourage members to take advantage of our CPD programme and use it as an opportunity to brush up on important skills they use every day, but also to seize this opportunity to expand horizons and learn about new facets of the industry, placing yourselves in someone else's shoes for a day to get a greater understanding and appreciation of another's role, which can help optimise the opportunities and tackle these challenges facing our region together.

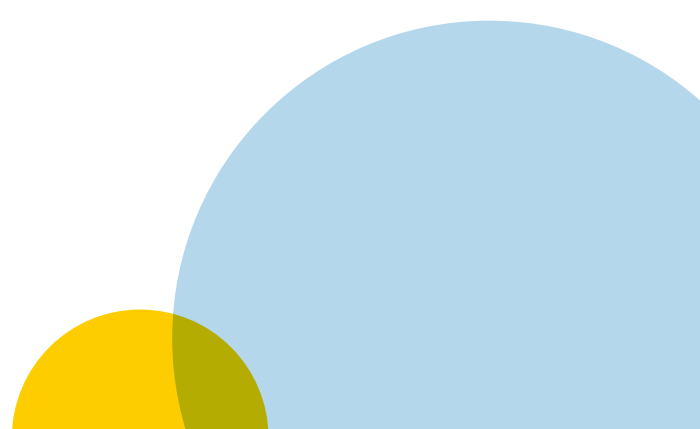
Therefore in 2023, I want to continue our region's great work to provide the best support for our members by:

- Supporting all planners in the northwest, no matter where you are in your career or how you entered the profession, we will deliver a diverse and comprehensive CPD calendar to enhance key skills and broaden your knowledge of the planning industry.
- Following the formation of the LPA Champions and the growing support we've delivered over the past few years, in 2023 we will look to explore how the RTPI can provide further tailored support to public sector planners. We will continue dialogue with the LPA Champions to develop and deliver bespoke CPD sessions for local authority planners and to provide additional support where possible.

- Supporting the accessibility and inclusivity of the planning industry, starting with how we operate. The Equality, Diversity and Inclusion (EDI) volunteer group will build on their work from 2022 and continue to instil EDI principles within our region, as well as working with others across the RTPI, to support the RTPI's member offer to welcome and support all across the planning profession.
- Focusing on what we, and the planning industry, can do to mitigate and adapt to the climate emergency through CPD sessions and research to support tackling this global crisis.

I can't wait to see what we will achieve in 2023 and if you'd like to get involved with our plans or have any great ideas on how we can best support you and planners across the Northwest – please get in touch!

Emilly Kitching Bower
RTPI NW Chair 2023





RTPI North West
Royal Town Planning Institute

THE NORTH WEST PLANNING YEAR
**A REVIEW OF
2022**

Registered Charity Number: 262865

Registered Office Address:
Royal Town Planning Institute
41 Botolph Lane London, EC3R 8DL